



Office of General Services

DESIGN & CONSTRUCTION GROUP
THE GOVERNOR NELSON A. ROCKEFELLER
EMPIRE STATE PLAZA
ALBANY, NY 12242

ADDENDUM NO. 2 TO PROJECT NO. 47207

CONSTRUCTION, HVAC AND ELECTRICAL WORK RENOVATE LOBBIES, BUILDING 12 DEPARTMENT OF LABOR STATE OFFICE BUILDING CAMPUS ALBANY, NY

June 20, 2025

NOTE: This Addendum forms a part of the Contract Documents. Insert it in the Project Manual. Acknowledge receipt of this Addendum in the space provided on the Bid Form.

CONSTRUCTION WORK SPECIFICATIONS

1. SECTION 064000 ARCHITECTURAL WOODWORK: Discard the Section bound in the Project Manual and substitute with the accompanying Section (pages 064000 – 1 thru 064000 – 4) noted “ADDENDUM 02”.
2. SECTION 092116 GYPSUM BOARD SYSTEMS, Subparagraph 2.01.B.1: Change “PW60” to read “PW48”.
3. SECTION 099101 CONSTRUCTION PAINTING: Discard the Section bound in the Project Manual and substitute with the accompanying Section (pages 099101 – 1 thru 099101 – 10) noted “ADDENDUM 02”.

CONSTRUCTION WORK DRAWINGS

4. Revised Drawings:
 - a. Drawing No. C202 and L202, noted “ADDENDUM #2”, accompanies this Addendum and supersedes the same numbered originally issued drawing.
 - b. Drawing Nos. A-401 and A-402, noted “ADDENDUM 2”, accompany this Addendum and supersede the same numbered previously issued drawings.
5. Drawing No. AD-111
 - a. DETAIL 1/AD-111, REMOVALS NORTH ENTRANCE REFLECTED CEILING PLAN: Remove “ACM ELECTRICAL WIRING INSULATION, TYP” in its entirety.

ELECTRICAL WORK DRAWINGS

6. Revised Drawing:
 - a. Drawing No. E-411, noted "ADDENDUM 2", accompanies this Addendum and supersedes the same numbered previously issued drawing.

END OF ADDENDUM

Brady M. Sherlock, P.E.
Director, Division of Design
Design & Construction

SECTION 064000**ARCHITECTURAL WOODWORK****PART 1 GENERAL****1.01 RELATED WORK SPECIFIED ELSEWHERE**

- A. Rough Carpentry: Section 061000.

1.02 REFERENCES

- A. Comply with the applicable provisions of standards of the Architectural Woodwork Institute (AWI) except as otherwise specified herein. References to "Premium", "Custom", and "Economy" Grades herein, shall be as defined in that Standard.

1.03 SUBMITTALS

- A. Shop Drawings: Show fabrication details and connections to adjacent Work. Apply AWI Quality Certification Program label to Shop Drawings.
- B. Product Data: Manufacturers' catalog sheets, specifications, and installation instructions for plastic laminates and hardware items.
- C. Samples:
 - 1. Solid Wood: Submit representative sample, with required finish.
 - 2. Wood Veneer: 12 inch square piece, with required finish.
 - 3. Resilient Base: Submit representative sample.
 - 4. Quartz Base: Submit representative sample with specified finish
- D. Informational Submittals:
 - 1. Qualification Data: For manufacturers and Installer.
- E. Contract Closeout Submittals:
 - 1. Quality Standard Compliance Certificates: AWI Quality Certification Program certificates.
 - 2. Base Maintenance Data: Deliver 2 copies, covering the installed products, to the Director's Representative.

1.04 WARRANTY

- A. Resilient Base: Provide manufacturer's standard limited commercial warranty

PART 2 PRODUCTS**2.01 CABINETS AND COUNTERTOPS**

- A. Comply with AWS Sections 10 and 11 except as otherwise specified herein.
- B. Cabinets:
 - 1. For Transparent Finish: Premium Grade, with exposed work of Rift Sawn Walnut lumber and Rift Cut Walnut face veneer, slip matched, with semi-exposed cabinetwork of White Oak lumber and face veneer.

2.02 HARDWARE

- A. Provide hardware as required for architectural woodwork, including cabinet hardware and miscellaneous items. Provide dull chrome finish (US26D), or nearest match available, except as otherwise indicated.
 - 1. Hinges: Steel for 3/4 inch flush doors; Stanley 1586, or Hager 1822.
 - 2. Pivots: Steel for 3/4 inch overlay doors; Stanley 331 and 332, or Hager 1043 and 1044.
 - 3. Cabinet Door/Drawer Pulls, Surface: Stanley 4477, or H.B. Ives 237.
 - 4. Magnetic Cabinet Door Catches: Stanley SP45, or H.B. Ives 325.

2.03 INTERIOR WOODWORK

- A. Grade: AWS Custom Grade
- B. Lumber: Kiln-dried to 8 percent for interior Work.
- C. Species; Solid Wood: Walnut (Public side of casework)
- D. Cut; Solid Wood: Plain sawn; Bookmatched
- E. Panel Products (private side of casework, i.e. under desk): Veneer core plywood.
 - 1. Face and Back Veneer Species: Walnut, A-D-INT APA, Exterior glue (low-VOC).
 - 2. Cut; Face and Back Veneer: Plain sliced.
- E. Finish: Transparent

2.04 WATERFALL COUNTERTOP

- A. Quartz agglomerate, nonporous surface countertop.
 - 1. Basis of Design: Cambria.
 - a. Color and style chosen by Architect from the full line submitted.

2.05 FABRICATION

- A. Machine and sand wood surfaces to comply with the requirements of the AWS Quality Grade specified.
- B. Mill assemble items to largest sizes practicable, to minimize field cutting and jointing. Allow for cutting and fitting where necessary to fit at the Site.

2.05 QUARTZ BASE

- A. Basis of Design: Corian Quartz Portoro
- B. Acceptable Manufacturers:
 - 1. Wilsonart Nova Serrana
 - 2. Approved equal.
- C. Thickness: 0.75"
- D. Height: 4" and 10"
- E. Locations: Per drawings
- F. Edge: Eased
- G. Corners: Mitered
- H. Finish: Gloss rating >45. Ensure exposed surfaces have uniform finish.
- I. Adhesive:
 - 1. Joint adhesive: Manufacturer's recommended adhesive
 - a. Color: Anthracite

2. Wall adhesive: Manufacturer's recommended adhesive, low VOCs

2.06 RESILIENT BASE

- A. Basis of Design: Roppe 4" Pinnacle Rubber Base
- B. Acceptable Manufacturers:
 3. Roppe
 4. Johnsonite
 5. Approved equal.
- C. Material: Rubber
- D. Thickness: 1/8"
- E. Height: 4"
- F. Color: Black Brown (193)
- G. Toe: Standard
- H. Adhesive: Manufacturer's recommended adhesive, VOCs ≤ 12 g/l

PART 3 EXECUTION

3.01 INSTALLATION

- A. Install the Work of this Section in strict accordance with the manufacturer's printed instructions and approved shop drawings (if any).
- B. Fit joints neatly and accurately with adjoining surfaces in same plane. Maintain field joint tolerances equal to those specified in AWI Standards.
- C. Fastening:
 1. Use concealed fasteners for work to receive transparent finish.
 2. Fasten assembled items together securely.
 3. Fasten items securely to supporting surfaces.
 4. Set exposed nails for putty stopping.
 5. Plug stop screws in exposed-to-view surfaces.
 6. Perform gluing operations in such a manner that the glued surfaces will be in close contact throughout, firmly cemented together and with joints as nearly invisible as possible.
- D. Casework: Install Work in a manner consistent with the AWI Quality Grade specified.
 1. Secure casework to grounds, stripping, or blocking with countersunk concealed fasteners and blind nailing, as required to provide a rigid installation. Scribe and cut for accurate fit to other finish Work.
 2. Adjust and lubricate casework hardware for proper operation.

3.02 BASE INSTALLATION

- A. Install the Work of this Section in accordance with the manufacturer's printed instructions, approved shop drawings, and as follows:
 1. Install components plumb and level, scribed to adjacent surfaces.
 2. Form field joints using adhesive, with joints inconspicuous in finished work.
 3. Shim quartz base if floor is not level and seal with joint sealant to floor.

4. Installation Tolerances: Plus or minus 1/8 inch overall.
5. Keep components clean during installation.

3.03 BASE CLEANING

- A. After installation, clean exposed surfaces to remove dirt, adhesive, sealant, and other blemishes. Comply with panel manufacturer's printed cleaning instructions.

3.03 BASE PROTECTION

- A. Apply heavy kraft paper or other heavy protective coating approved by the Director's Representative, masked in place to prevent surface damage.

END OF SECTION

SECTION 099101**CONSTRUCTION PAINTING****PART 1 GENERAL****1.01 DEFINITIONS**

- A. The word “paint” in this Section refers to substrate cleaners, fillers, sealers, primers, undercoats, enamels and other first, intermediate, last or finish coatings.
- B. The word “primer” in this Section refers to substrate cleaners, fillers, sealers, undercoats, and other first or intermediate coats beneath the last or finish coating.
- C. The words “finish paint” in this Section refers to the last or final coat and previous coats of the same material or product directly beneath the last or final coat.
- D. Finish Paint Systems: Finish paint and primers applied over the same substrate shall be considered a paint system of products manufactured or recommended by the finish coat manufacturer.
 - 1. Finish paint products shall meet or exceed specified minimum physical properties.

1.02 RELATED SECTIONS

- A. Section 057000 – Ornamental Metal

1.03 SUBMITTALS

- A. Painting Schedule: Cross-referenced Painting Schedule listing all exterior and interior substrates to be painted and specified finish paint type designation; product name and manufacturer, recommended primers and product numbers, and finish paint color designation for each substrate to be painted.
 - 1. Designate interior substrates by building name and number, floor, room name and number, and surface to be painted.
- B. Product Data Sheets: Manufacturer’s published product data sheets describing the following for each finish paint product to be applied:
 - 1. Percent solids by weight and volume, solvent, vehicle, weight per gallon, ASTM D 523 gloss/reflectance angle, recommended wet and dry film thickness, volatile organic compound (VOC) content in lbs/gallon, product use limitations and environmental restrictions, substrate surface preparation methods, directions and precautions for mixing and thinning, recommended application methods, square foot area coverage per gallon, storage instructions, and shelf-life expiration date.
 - 2. Manufacturer’s recommended primer for each finish paint product and substrate to be painted.

3. Manufacturer's complete range of available colors for each finish paint product to be applied.
- C. Finish Paint Type Samples: Two finish paint samples applied over recommended primers for each substrate to be painted.
1. Samples shall be in the designated color and specified ASTM D 523 reflectance.
 2. Label each sample with the following information:
 - a. Project number and Painting Schedule designation describing substrates and locations represented by the sample.
 - b. Finish paint and primer manufacturer, product names and numbers, finish paint color and reflectance.
 3. Leave a 1 inch wide exposed strip of unpainted substrate and each coat of primer and finish paint.
 4. Sample Sizes:
 - a. Ceiling Substrates: 12 inch square panels.
- D. Quality Control Submittals:
1. Test Reports: Furnish certified test results from an independent testing laboratory, showing that products submitted comply with the specifications, when requested by the Director's Representative.
 2. Certificates: Furnish certificates of compliance required under QUALITY ASSURANCE Article.

1.03 QUALITY ASSURANCE

- A. Volatile Organic Compounds (VOCs) Regulatory Requirements: Chapter III of Title 6 of the official compilation of Codes, Rules and Regulations of the State of New York (Title 6 NYCRR), Part 205 Architectural Surface Coatings.
1. Certificate of Compliance: List of each paint product to be delivered and installed. List shall include written certification stating that each paint product listed complies with the VOC regulatory requirements in effect at the time of job site delivery and installation.
- B. Container Labels: Label each product container with paint manufacturer's name, product name and number, color name and number, thinning and application instructions, date of manufacture, shelf-life expiration date, required surface preparations, recommended coverage per gallon, wet and dry film thickness, drying time, and clean up procedures.
- C. Field Examples:
1. Prior to on-site painting, at locations designated by the Director's Representative, apply field examples of each paint type to be applied.
 2. Field examples to be applied on actual substrates to be painted and shall duplicate earlier approved paint samples.

- a. Interior field examples to be applied in rooms and spaces to be painted with the same products.
 - b. Field Example Minimum Wet and Dry Film Thickness: As indicated on approved product data sheet.
 - c. Application: Apply each coat in a smooth uniform wet mil thickness without brush marks, laps, holidays, runs, stains, cloudiness, discolorations, nail holes and other surface imperfections.
 - 1) Leave a specified exposed width of each previous coat beneath each subsequent coat of finish paint and primer.
 - d. Use of Field Examples: Field examples shall serve as a quality control standard for acceptance or rejection of painting Work to be done under this Section.
3. Field Example Sizes:
- a. Ceiling Examples: 200 square feet with 2 foot wide strips.
4. Do not begin applying paints represented by field examples until examples have been reviewed and approved by the Director's Representative.
- a. Protect and maintain approved field examples until all painting work represented by the example has been completed and approved.
- D. Compatibility of Paint Materials: Primers and intermediate paints shall be products manufactured or recommended by the finish paint manufacturer.

1.04 DELIVERY, STORAGE, AND HANDLING

- A. Delivery: Deliver materials to the Site in original, unopened containers and cartons bearing manufacturer's printed labels. Do not deliver products which have exceeded their shelf life, are in open or damaged containers or cartons, or are not properly labeled as specified.
- B. Storage and Handling: Store products in a dry, well ventilated area in accordance with manufacturer's published product data sheets. Storage location shall have an ambient air temperature between 45 degrees F and 90 degrees F.

1.05 PROJECT CONDITIONS

- A. Environmental Requirements:
 - 1. Ambient Air Temperature, Relative Humidity, Ventilation, and Surface Temperature: Comply with paint manufacturer's published product data sheet or other printed product instructions.
 - 2. If paint manufacturer does not provide environmental requirements, use the following:
 - a. Ambient Air Temperature: Between 45 degrees F and .75 degrees F.
 - b. Relative Humidity: Below 75 percent.

- c. Ventilation: Maintain the painting environment free from fumes and odors throughout the Work of this Section.
 - d. Surface Temperature: At least 5 degrees F above the surface dewpoint temperature.
- 3. Maintain environmental requirements throughout the drying period.
- B. The following items are not to be painted unless otherwise specified, noted or directed:
 - 1. Exposed stainless steel, chrome, copper, bronze, brass, and aluminum.
 - 2. Factory prefinished items.
 - 3. Galvanized items not exposed in finished spaces.

1.06 EXTRA MATERIALS

- A. Provide extra finish paint materials, from the same production run as paints to be applied, in the following quantities for each color installed:
 - 1. Paint Types FRL and IAL-1: Two gallons, each type.

PART 2 PRODUCTS

2.01 PAINT MANUFACTURERS

- A. Where noted, the following finish paint manufacturers produce the paint types specified.
 - 1. Benjamin Moore and Co., 51 Chestnut Ridge Rd., Montvale, NJ 07645, (201) 573-9600.
 - 2. Flame Control Coatings, Inc., P. O. Box 786, Niagara Falls, NY 14302-0786, (716) 282-1399.
 - 3. PPG Architectural Finishes, One PPG Plaza, Pittsburgh, PA 15272, (800) 441-9695.
 - 4. ICI Dulux Paints, 4000 Dupont Cr., Louisville, KY 40207, (800) 984-5444.
 - 5. Sherwin-Williams Co., Cleveland, OH 44101, (800) 321-8194.

2.02 MISCELLANEOUS PRODUCTS

- A. Cleaning Solvents: Low toxicity with flash point in excess of 100 degrees F.
- B. Color Pigments: Pure, nonfading, finely ground pigments with at least 99 percent passing a 325 mesh sieve.
 - 1. Use lime-proof color pigments on masonry, concrete and plaster.

2. Use exterior pigments in exterior paints.
- C. Masking Tape: Removable paper or fiber tape, self-adhesive and nonstaining.
- D. Mineral Spirits: Low odor type recommended by finish paint manufacturer.
- E. Turpentine: ASTM D 13.

2.03 FINISH PAINT TYPES

- A. Physical Properties:
 1. Specified percent solids by weight and volume, pigment by weight, wet and dry film thickness per coat, and weight per gallon are minimum physical properties of acceptable materials.
 - a. Opaque Pigmented Paints: Physical properties specified are for white titanium dioxide base before color pigments are added.
 - b. Specified minimum wet and dry film thickness per coat are for determining acceptable finish paint products. Minimum wet and dry film thickness per coat to be applied shall comply with approved finish paint manufacturer's product data sheets.
 2. Gloss or Reflectance: The following ASTM D 523 specified light levels and angles of reflectance:
 - a. Flat: Below 15 at 85 degrees.
- B. Exterior Finish Paint Types:
 1. Paint Type EAL-1: Exterior Acrylic Latex, Flat.
 - a. Solids by Weight: 52.0 percent.
 - b. Solids by Volume: 32.0 percent.
 - c. Solvent: Water.
 - d. Vehicle: 100 percent acrylic resin.
 - e. Weight Per Gallon: 10.5 lbs.
 - f. Wet Film Thickness: 4.0 mils.
 - g. Dry Film Thickness: 1.3 mils.
 - h. Manufacturers: ICI Dulux, PPG, Sherwin-Williams.
 - i. Locations: Exterior Soffits
 2. Paint Type ESP-1: Exterior Steel Zinc-Rich Primer, Flat.
 - a. Solids by Weight: 79.0 percent.
 - b. Solids by Volume: 68.0 percent.
 - c. Pigment by Weight: 90.0 percent zinc.
 - d. Solvent: Water.
 - e. Weight per Gallon: 24.6 lbs.
 - f. Dry Film Thickness: 3.0 mils if finish coated, 4.0 mils if not finish coated.
 - g. Manufacturers: Ameron Protective Coatings, Inorganic Coatings, Valspar.
 - h. Locations: Surface-mounted conduit at canopy
 3. Paint Type ESP-2: Exterior Steel Zinc-Rich Primer, Flat.

- a. Solids by Weight: 79.0 percent.
 - b. Solids by Volume: 68.0 percent.
 - c. Pigment by Weight: 90.0 percent zinc.
 - d. Solvent: Water.
 - e. Weight per Gallon: 24.6 lbs.
 - f. Dry Film Thickness: 3.0 mils if finish coated, 4.0 mils if not finish coated.
 - g. Manufacturers: Ameron Protective Coatings, Inorganic Coatings, Valspar.
 - h. Locations: Canopy columns
- C. Interior Finish Paint Types:
- 1. Paint Type FRL-1: Fire Retardant Latex, Flat.
 - a. Solids by Weight: 56.0 percent.
 - b. Solids by Volume: 45.0 percent.
 - c. Weight Per Gallon: 10.5 lbs.
 - d. Wet Film Thickness: 8.0 mils.
 - e. Dry Film Thickness: 4.0 mils.
 - f. Manufacturers: Benjamin Moore, Flame Control, PPG.
 - g. Locations: Lobby ceilings, existing fireproofing, mechanical & electrical above lobby ceilings, & upper portion of walls above marble paneling.
 - 2. Paint Type IAL-1: Interior Acrylic Latex, Flat.
 - a. Solids by Weight: 50.0 percent.
 - b. Solids by Volume: 32.0 percent.
 - c. Solvent: Water.
 - d. Vehicle: Vinyl acrylic resin.
 - e. Weight Per Gallon: 10.9 lbs.
 - f. Wet Film Thickness: 3.8 mils.
 - g. Dry Film Thickness: 1.3 mils.
 - h. Manufacturers: Benjamin Moore, ICI Dulux, Sherwin-Williams.
 - i. Locations: Interior partitions (exposed gypsum of green wall)
 - 3. Paint Type IAL-2 Interior Acrylic Latex, Flat.
 - a. Solids by Weight: 50.0 percent.
 - b. Solids by Volume: 32.0 percent.
 - c. Solvent: Water.
 - d. Vehicle: Vinyl acrylic resin.
 - e. Weight Per Gallon: 10.9 lbs.
 - f. Wet Film Thickness: 3.8 mils.
 - g. Dry Film Thickness: 1.3 mils.
 - h. Manufacturers: Benjamin Moore, ICI Dulux, Sherwin-Williams.
 - i. Locations: Interior partitions (exposed gypsum of wall at North Lobby above Modular Ceiling)”
- D. Colors: Provide paint colors either shown on contract drawings or to be selected by the Architect from finish paint manufacturers available color selections.

1. Approved finish paint manufacturers to match designated colors of other manufacturers where colors are shown on contract documents.
2. Schedule:
 - a. EAL-1: Match existing.
 - b. ESP-1: Match surrounding.
 - c. ESP-2: Architect to select from full product range
 - d. FRL-1: Architect to select from range of blacks
 - e. IAL-1: Architect to select from range of whites and beiges.
 - f. **IAL-2: Architect to select from range of blacks.**

PART 3 EXECUTION

3.01 EXAMINATION

- A. Examine surfaces to be prepared, primed, or painted for compliance with contract documents, required environmental conditions, manufacturer's product data sheets, product label instructions and other written requirements.
 1. Do not begin any phase of the work without first checking and verifying that surfaces and environmental conditions are acceptable for such work and that any earlier phase deficiencies and discrepancies have been properly corrected.
 - a. The commencement of new work shall be interpreted to mean acceptance of surfaces to be affected.

3.02 PREPARATION

- A. Protection: Cover and protect surfaces to be painted, adjacent surfaces not to be painted, and removed furnishings and equipment from existing paint removals, airborne sanding particles, cleaning fluids and paint spills using suitable drop cloths, barriers and other protective devices.
 1. Adjacent exterior surface protections include roofs, walls, landscaping, driveways and walkways. Interior protections include floors, walls, furniture, furnishings and electronic equipment.
 2. Remove and replace removable hardware, lighting fixtures, telephone equipment, other devices and cover plates over concealed openings in substrates to be painted.
 - a. Cover and neatly mask permanently installed hardware, lighting fixtures, cover plates and other devices which cannot be removed and are not scheduled for painting.
 3. Schedule and coordinate surface preparations so as not to interfere with work of other trades or allow airborne sanding dust particle to fall on freshly painted surfaces.
 4. Provide adequate natural or mechanical ventilation to allow surfaces to be prepared and painted in accordance with product manufacturer's instructions and applicable regulations.

5. Provide and maintain “Wet Paint” signs, temporary barriers and other protective devices necessary to protect prepared and freshly painted surfaces from damages until Work has been accepted.
- B. Clean and prepare surfaces to be painted in accordance with specifications, paint manufacturer’s approved product data sheets and printed label instructions. In the event of conflicting instructions or directions, the more stringent requirements shall apply.
1. Cleaners: Use only approved products manufactured or recommended by finish paint manufacturer. Unless otherwise recommended by cleaner manufacturer, thoroughly rinse with clean water to remove surface contaminants and cleaner residue.
- C. Surfaces:
1. Existing Plaster, Cement Plaster, and Gypsum Wallboard:
 - a. Fill cracks, holes, and other indentations smooth to adjacent surfaces using specified bedding, spackling, and finishing compounds.
 - b. Plaster: Scrape and sand smooth ridges, spills, nibs, and other surface projections.
 - c. Cement Plaster: Coat surfaces to be patched with a bonding agent. Patch cement plaster with an approved mortar patching mix and finish to match adjacent surface and texture.
 - d. Gypsum Wallboard: Fill and sand smooth minor bedding and finishing compound defects.
 - e. Vacuum and wipe surfaces free of all sanding residue and dust
 2. Other Substrates: See finish paint manufacturer’s recommendations.
- D. Painting Material Preparations:
1. Prepare painting materials in accordance with manufacturer’s approved product data sheets and printed label instructions.
 - a. Stir materials before and during application for a consistent mixture of density. Remove container surface paint films before stirring and mixing.
 - b. Slightly tint first opaque finish coat where primer and finish coats are the same color.
 - c. Do not thin paints unless allowed and directed to do so in writing within limits stated on approved product data sheets.

3.03 APPLICATION

- A. Environmental Conditions:
1. Water-based Paints: Apply when surface temperatures will be 50 degrees Fahrenheit to 90 degrees Fahrenheit throughout the drying period.
 2. Other Paints: Apply when surface temperatures will be 45 degrees Fahrenheit to 95 degrees Fahrenheit throughout the drying period.

3. Apply exterior paints during daylight hours free from rain, snow, fog and mist when ambient air conditions are more than 5 degrees above the surface dewpoint temperature and relative humidity less than 85 percent.
 - a. When exterior painting is allowed or required during nondaylight hours, provide portable outdoor weather recording station with constant printout showing hourly to diurnal air temperature, humidity, and dewpoint temperature.
 4. Exterior Cold Weather Protection: Provide heated enclosures necessary to maintain specified temperature and relative humidity conditions during paint application and drying periods.
- B. Install approved paints where specified, or shown on the drawings, and to match approved field examples.
1. Paint Applicators: Brushes, rollers or spray equipment recommended by the paint manufacturer and appropriate for the location and surface area to be painted.
 - a. Approved minimum wet and dry film thicknesses shall be the same for different application methods and substrates.
- C. Paint Type Coats To Be Applied: Unless specified otherwise by finish paint manufacturer's product data sheet, the number of coats to be applied for each paint type are as follows:
1. Paint Type FRL: Apply 1 coat of primer if needed and number of finish coats required to meet specified fire rating in accordance with paint manufacturers product data sheet and printed label instructions.
- D. Surfaces: Unless otherwise specified or shown on the drawings, paint surfaces as follows:

3.04 FIELD QUALITY CONTROL

- A. Paint Samples: Assist the Director's Representative in obtaining random one quart paint samples for testing at any time during the Work.
1. Notify the Director's Representative upon delivery of paints to the Site.
 2. Furnish new one quart metal paint containers with tight fitting lids and suitable labels for marking.
 - a. Furnish labor to thoroughly mix paint before sampling and provide assistance with sampling when required.

3.05 ADJUSTING AND CLEANING

- A. Reinstall removed items after painting has been completed.
1. Restore damaged items to a condition equal to or better than when removed. Replace damaged items that cannot be restored.
- B. Touch up and restore damaged finish paints. Touch up and restoration paint coats are in addition to the number of specified finish paint coats.

- C. Remove spilled, splashed, or spattered paint without marring, staining or damaging the surface. Restore damaged surfaces to the satisfaction of the Director's representative.
- D. Remove temporary barriers, masking tape, and other protective coverings upon completion of painting, cleaning and restoration work.

END OF SECTION



WARNING:
THE ALTERATION OF THIS MATERIAL IN ANY WAY, UNLESS DONE UNDER THE DIRECTION OF A COMPARABLE PROFESSIONAL, I.E. ARCHITECT FOR AN ARCHITECT, ENGINEER FOR AN ENGINEER OR LANDSCAPE ARCHITECT FOR A LANDSCAPE ARCHITECT, IS A VIOLATION OF THE NEW YORK STATE EDUCATION LAW AND/OR REGULATIONS AND IS A CLASS "A" MISDEMEANOR.

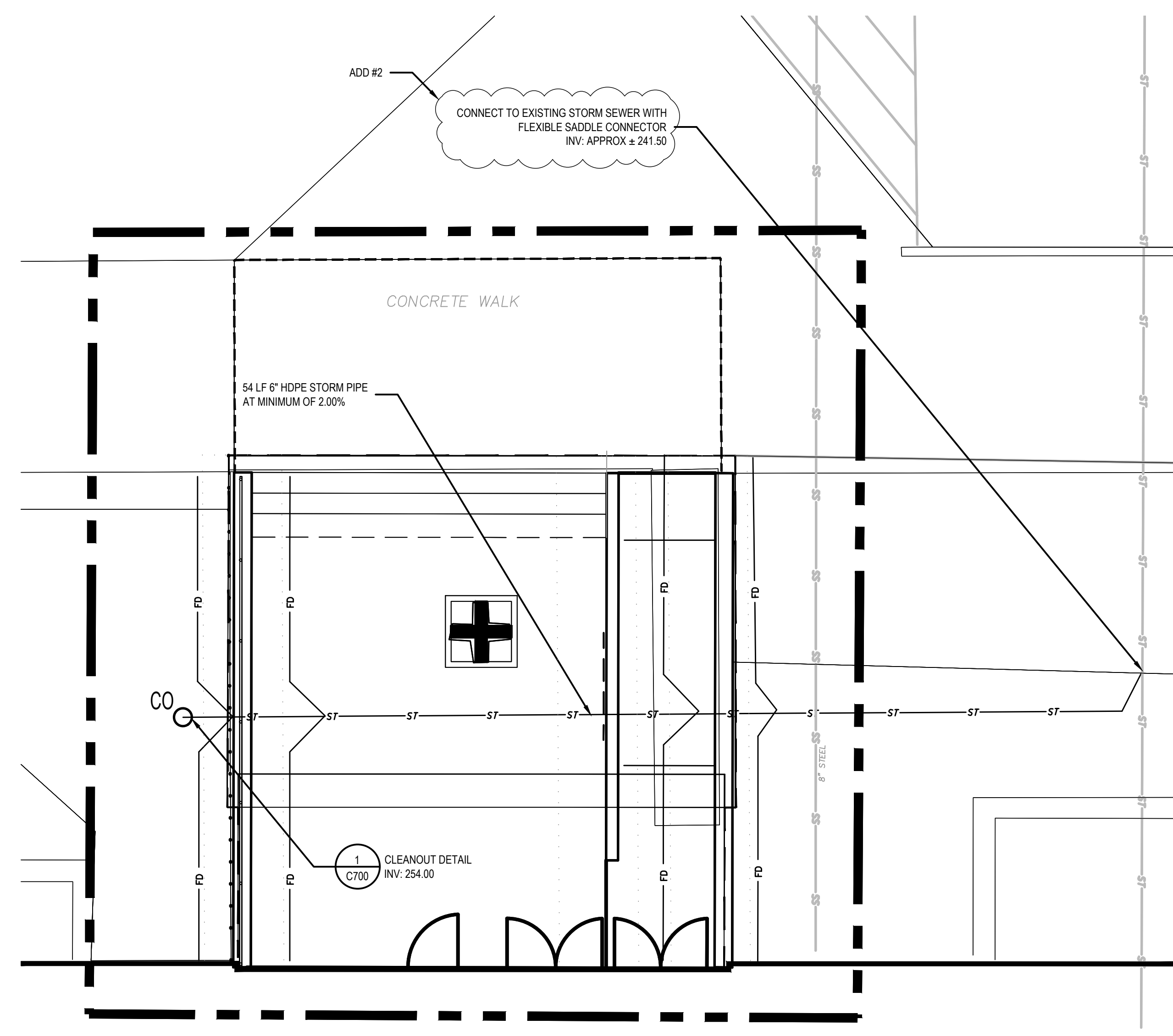
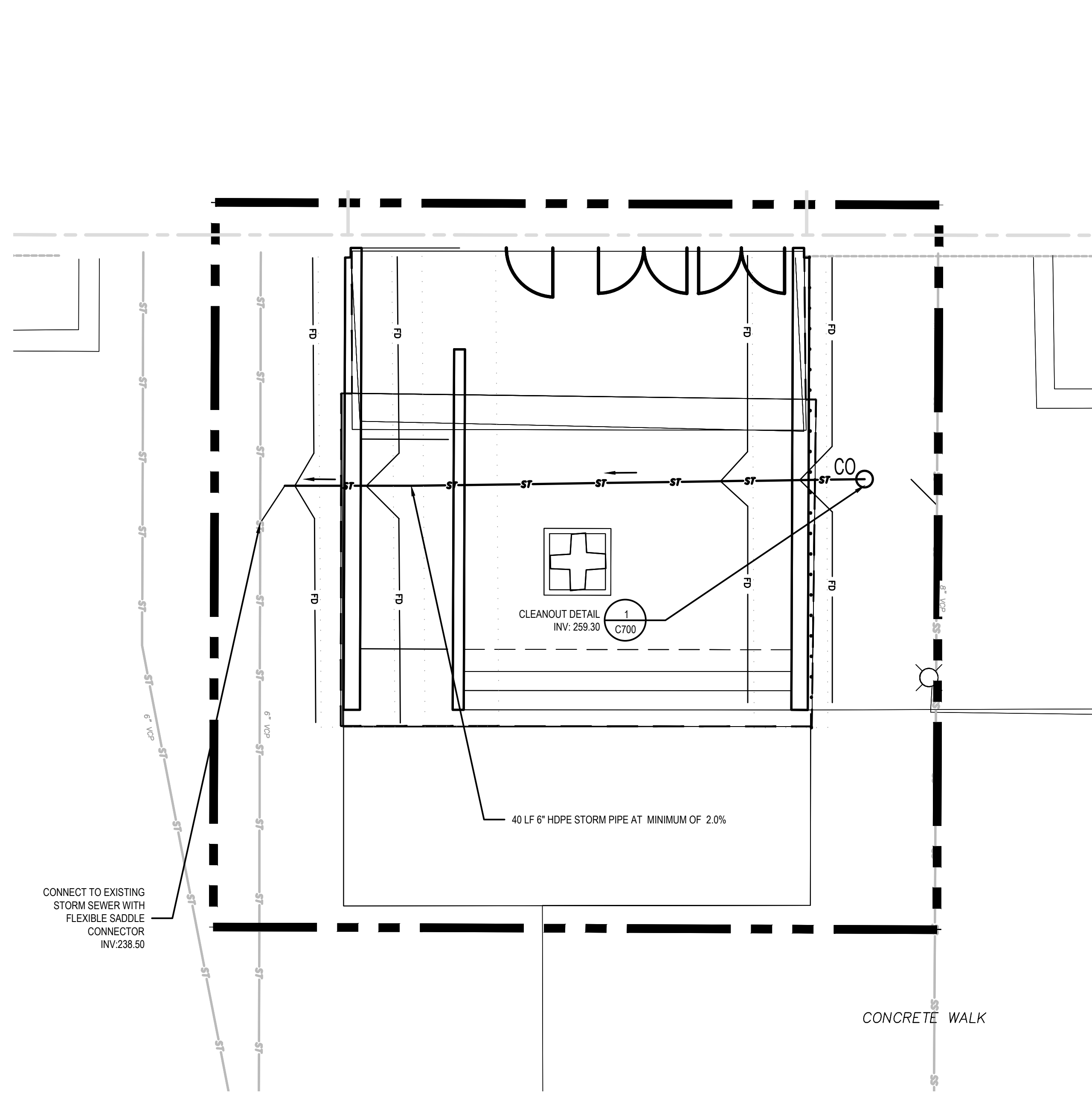


CONTRACT: **CONSTRUCTION**
TITLE: **DOL BUILDING 12 PROVIDE RENOVATE LOBBIES**
LOCATION: **DEPARTMENT OF LABOR BUILDING NO. 12 STATE OFFICE BLDG CAMPUS ALBANY, NY**
CLIENT: **DEPARTMENT OF LABOR**

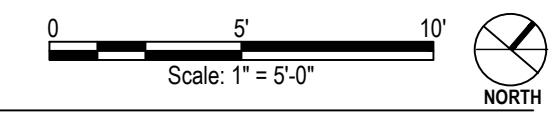
ADDENDUM #2	06/20/2025	W. ENT. INVERT
MARK	DATE	DESCRIPTION
PROJECT NUMBER:	47207-C	
DESIGNED BY:	WH	
DRAWN BY:	WH	
FIELD CHECK:	---	
APPROVED:	TL	
SHEET TITLE:		
EAST AND WEST ENTRANCE DRAINAGE PLANS		
DRAWING NUMBER:		
C202		
SHEET 25 OF 71		

DRAINAGE LEGEND		
KEY	MATERIAL	DETAIL
—ST—ST—	EXISTING STORM PIPE	
—ST—ST—	STORM PIPE	5 C700
—W—	WATER LINE	3 C700
.....	FOUNDATION OUTLINE	
—FD—	FOUNDATION DRAIN	2 C700
○CO	CLEAN OUT	1 C700

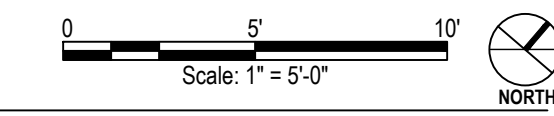
- GENERAL SHEET NOTES - UTILITIES**
- STORM SEWER PIPE SHALL BE HIGH DENSITY POLYETHYLENE PIPE (HDPE) WITH A SMOOTH INTERIOR OR AS NOTED.
 - ANY EXISTING STRUCTURES OR PIPES SHOWN ON THE PLANS ARE ASSUMED TO BE PROTECTED AND TO REMAIN OR TO BE SALVAGED. IF ANY EXISTING STRUCTURES TO REMAIN OR TO BE SALVAGED ARE DAMAGED DURING CONSTRUCTION, IT SHALL BE THE CONTRACTOR'S RESPONSIBILITY TO REPAIR AND/OR REPLACE THE EXISTING STRUCTURE AS NECESSARY TO RETURN IT TO EXISTING CONDITIONS OR BETTER.
 - ALL STORM PIPE ENTERING STRUCTURES SHALL BE GROUTED TO ASSURE THAT THE CONNECTION AT THE STRUCTURE IS WATERTIGHT.
 - ALL STORM SEWER MANHOLES IN PAVED AREAS SHALL BE FLUSH WITH THE PAVEMENT, AND SHALL HAVE TRAFFIC BEARING RINGS AND COVERS. MANHOLES IN UNPAVED AREAS SHALL BE FLUSH WITH FINISHED GRADE. ALL LIDS SHALL BE LABELED "STORM SEWER".
 - ALL EXISTING UTILITY STRUCTURES, COVERS, OR GRATES LOCATED IN AREAS TO BE REGRADED OR REPAVED SHALL BE ADJUSTED TO NEW GRADES.
 - REFER TO LANDSCAPE ARCHITECTURE PLANS FOR FINISH FOR ALL UNSURFACED AREAS.
 - ALL WORK MUST COMPLY WITH ALL APPLICABLE GOVERNING CODES AND BE CONSTRUCTED TO THE SAME.
 - ALL UNSUITABLE MATERIALS MUST BE DISPOSED OF OFF SITE TO A LOCATION WITH ALL APPROPRIATE APPROVALS, INCLUDING BUT NOT LIMITED TO HAVING A CURRENT SPDES PERMIT AND NOI. MAINTAIN PROOF OF THE APPROPRIATE PERMITS AND PERMITS APPROVED, ALONG WITH THAT OF THE EXPORT SITE.
 - HORIZONTAL AND VERTICAL LOCATION OF ALL EXISTING STORM SEWER STRUCTURES, PIPE AND ALL UTILITIES MUST BE VERIFIED PRIOR TO CONSTRUCTION.
 - LINES UNDERGROUND SHALL BE INSTALLED, INSPECTED, AND APPROVED BEFORE BACKFILLING. NOTIFY DIRECTOR'S REPRESENTATIVE TO ALLOW FOR INSPECTION BEFORE BACKFILL IS PLACED.
 - ALL EARTHWORK, INCLUDING EXCAVATION AND BACKFILL OPERATIONS, SHALL BE PERFORMED IN THE DRY. PROVISIONS SHALL BE MADE TO REMOVE INFILTRATING GROUNDWATER, PERCHED WATER, AND SURFACE RUNOFF WHICH DISCHARGE TO EARTHWORK EXCAVATIONS AND BACKFILL AREAS. DESIGN, CONSTRUCTION AND MAINTENANCE OF WATER CONTROL MEASURES DURING EARTHWORK, EXCAVATION, AND BACKFILL PROCEDURES SHALL BE THE RESPONSIBILITY OF THE CONTRACTOR. PROPER DRAINAGE MEASURES SHALL BE PLANNED PRIOR TO STARTING EARTHWORK AND EXCAVATIONS.



1 EAST AND WEST ENTRANCE DRAINAGE PLANS
1"=5'-00"



2 WEST ENTRANCE EROSION AND SEDIMENT CONTROL PLAN
1"=5'-00"



WARNING:
THE ALTERATION OF THIS MATERIAL IN ANY WAY, UNLESS DONE UNDER THE DIRECTION OF A COMPARABLE PROFESSIONAL, I.E. ARCHITECT FOR AN ARCHITECT, ENGINEER FOR AN ENGINEER OR LANDSCAPE ARCHITECT FOR A LANDSCAPE ARCHITECT, IS A VIOLATION OF THE NEW YORK STATE EDUCATION LAW AND/OR REGULATIONS AND IS A CLASS "A" MISDEMEANOR.



CONTRACT: **CONSTRUCTION**
TITLE: DOL BUILDING 12 PROVIDE RENOVATE LOBBIES
LOCATION: BUILDING 12 STATE OFFICE BUILDING CAMPUS ALBANY, NY 12240
CLIENT: DEPARTMENT OF LABOR

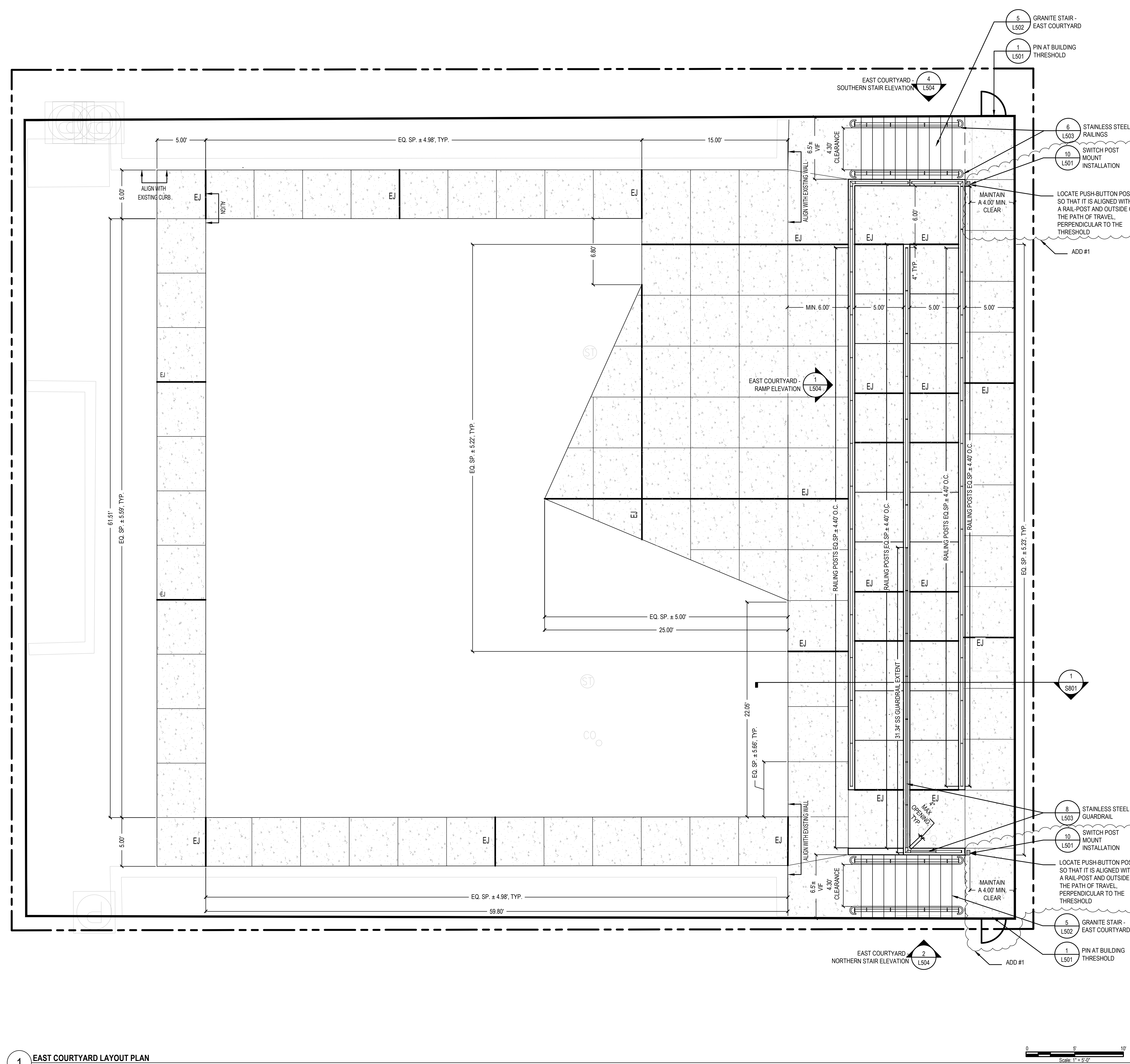
06/18/2025	ADDENDUM # 2	
01/24/2025	CONSTRUCTION SET	
MARK	DATE	DESCRIPTION
PROJECT NUMBER:	230840	
DESIGNED BY:	VT	
DRAWN BY:	MO/MB/MP	
FIELD CHECK:	WS	
APPROVED:	JR	
SHEET TITLE:		
EAST COURTYARD LAYOUT PLAN		
DRAWING NUMBER:		
L202		
SHEET 7 OF 71		

GENERAL SHEET NOTES - LAYOUT

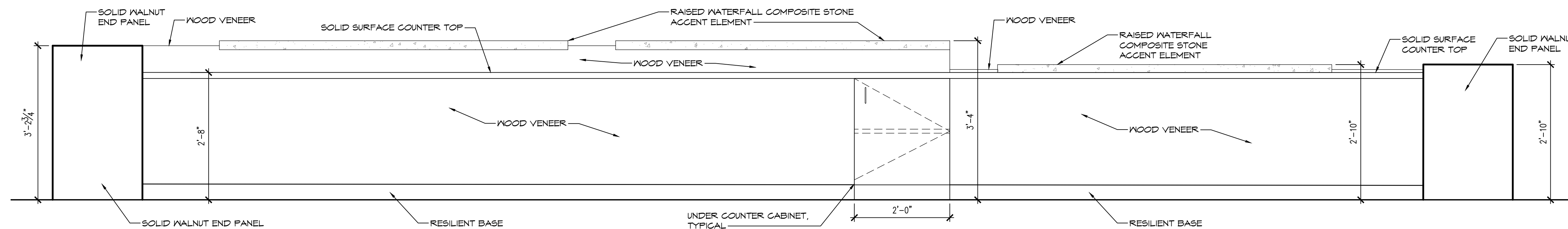
- SEE CIVIL DRAWINGS FOR LAYOUT OF UNDERGROUND UTILITIES.
- INSTALL EXPANSION JOINTS EVERY 30' MAX. IN CONCRETE PAVEMENT AND IN AREAS WHERE CONCRETE ABUTS CURBS OR OTHER FIXED OBJECTS.
- VERIFY DIMENSIONS AND ACCEPT CONDITIONS BEFORE PROCEEDING WITH WORK. REPORT ANY DISCREPANCIES TO DIRECTOR'S REPRESENTATIVE BEFORE PROCEEDING.
- DO NOT SCALE FROM MEASURING DRAWINGS.
- LAYOUT DIMENSIONS AND RADII ARE TO EDGE OF CONCRETE WALKS AND FACE OF CURB.
- SITE DRAWINGS BASED ON SURVEY BY FISHER ASSOCIATES TOPOGRAPHIC SURVEY IS REFERENCED TO A SURVEY PREPARED BY CHAZEN ENGINEERING, LAND SURVEYING, & LANDSCAPE ARCHITECTURE CO., P.C. COMPLETED IN 2008.

LAYOUT LEGEND

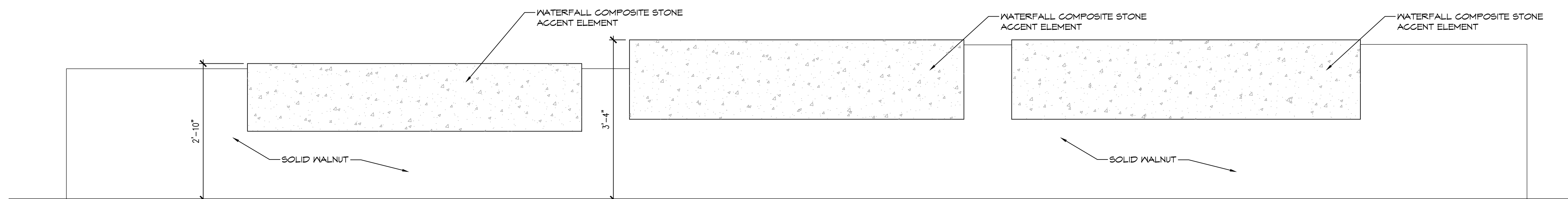
KEY	MATERIAL	DETAIL
[Pattern]	MEDIUM DUTY CONCRETE	2 L501
[Pattern]	ASPHALT PATCH	6.8 L501
[Pattern]	GRAVEL MULCH	4 L500
[Pattern]	DETECTABLE WARNING	8 L501
[Pattern]	TOOL JOINT	3 L501
[Pattern]	EXPANSION JOINT	3 L501
[Pattern]	MATCH EXISTING PAVEMENT TO REMAIN AT SAWCUT LOCATION	
[Pattern]	CONTRACT LIMIT LINE	



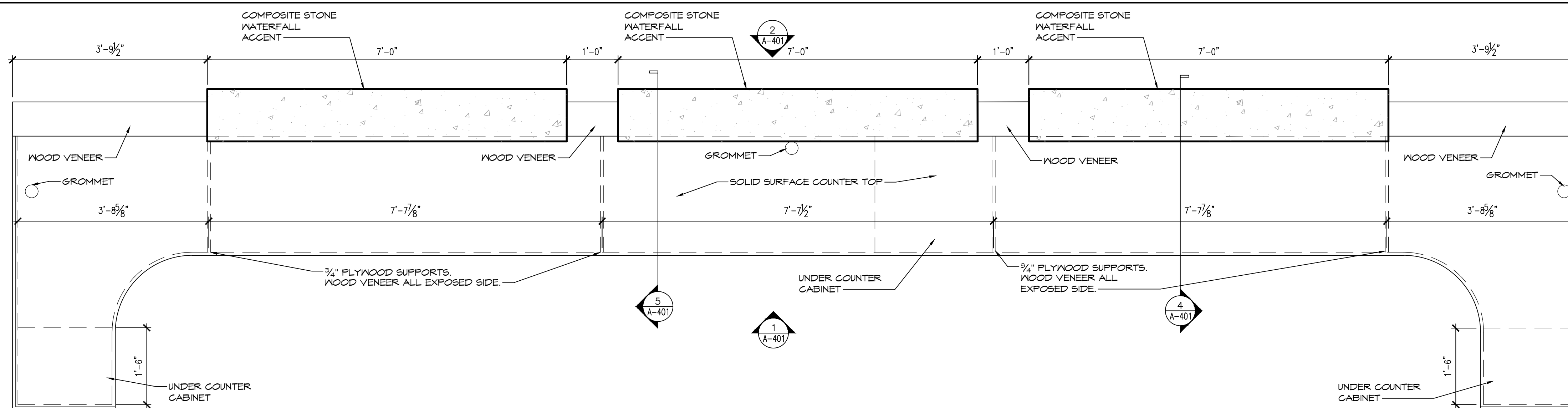
1 EAST COURTYARD LAYOUT PLAN
1"=5'-0"



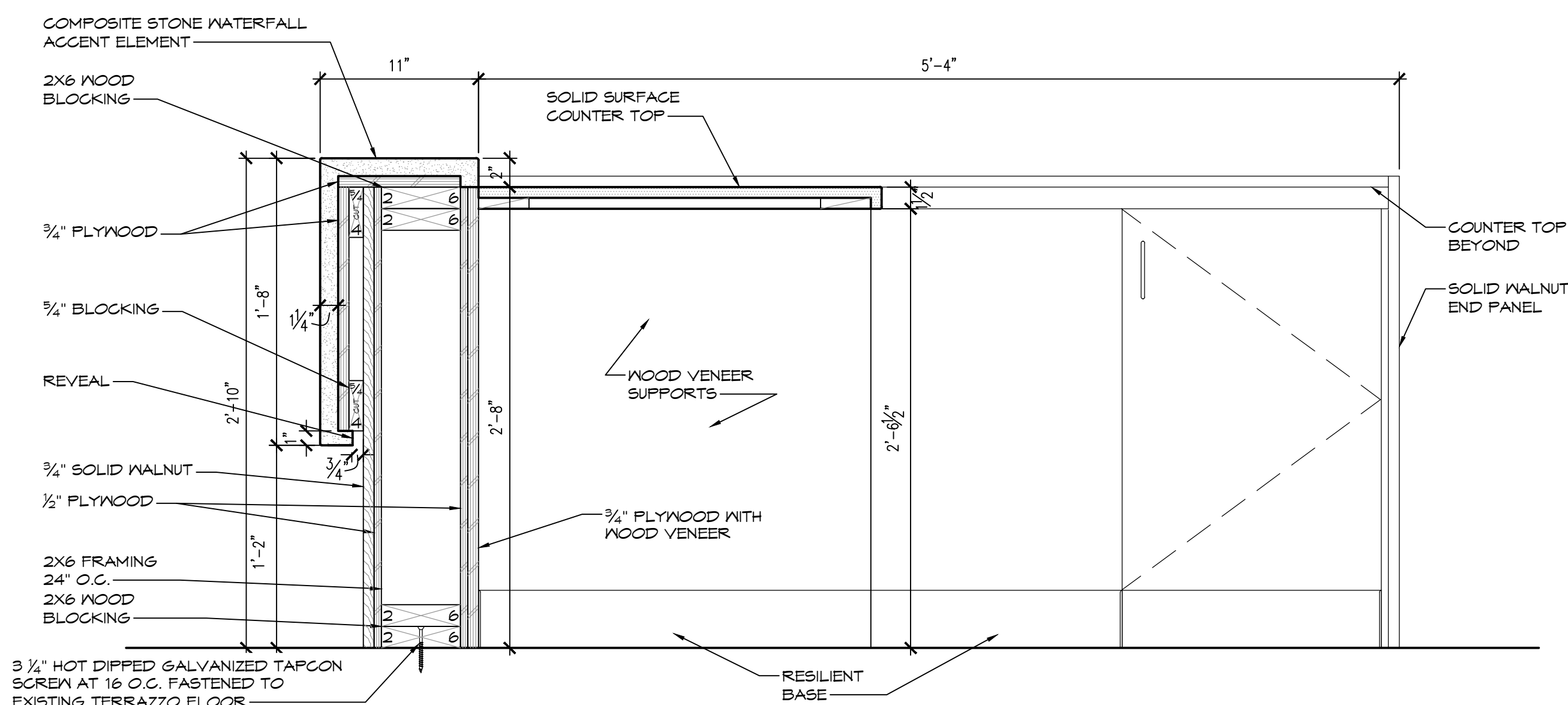
1 DESK ELEVATION
SCALE: 3/4" = 1'-0"



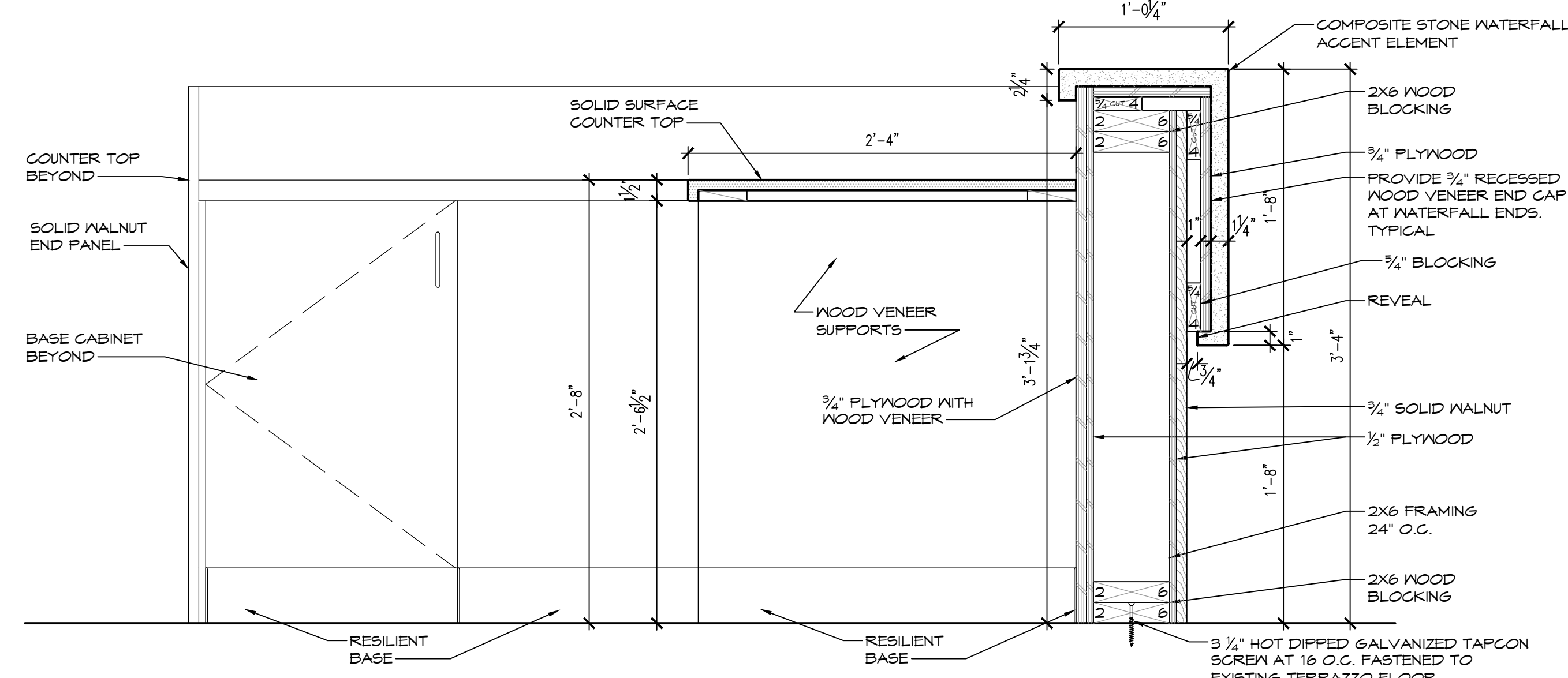
2 DESK ELEVATION
SCALE: 3/4" = 1'-0"



3 NORTH LOBBY INFORMATION DESK PLAN
SCALE: 3/4" = 1'-0"



4 INFORMATION DESK DETAIL
SCALE: 1 1/2" = 1'-0"



5 INFORMATION DESK DETAIL
SCALE: 1 1/2" = 1'-0"

CONSULTANT



WARNING:
THE ALTERATION OF THIS MATERIAL IN ANY WAY, UNLESS DONE UNDER THE DIRECTION OF A COMPARABLE PROFESSIONAL, I.E. ARCHITECT FOR AN ARCHITECT, ENGINEER FOR AN ENGINEER OR LANDSCAPE ARCHITECT FOR A LANDSCAPE ARCHITECT, IS A VIOLATION OF THE NEW YORK STATE EDUCATION LAW AND/OR REGULATIONS AND IS A CLASS "A" MISDEMEANOR.



CONTRACT: **CONSTRUCTION**
TITLE: RENOVATE LOBBIES, BUILDING 12
LOCATION: DEPARTMENT OF LABOR STATE OFFICE BLDG CAMPUS ALBANY, NY
CLIENT: DEPARTMENT OF LABOR

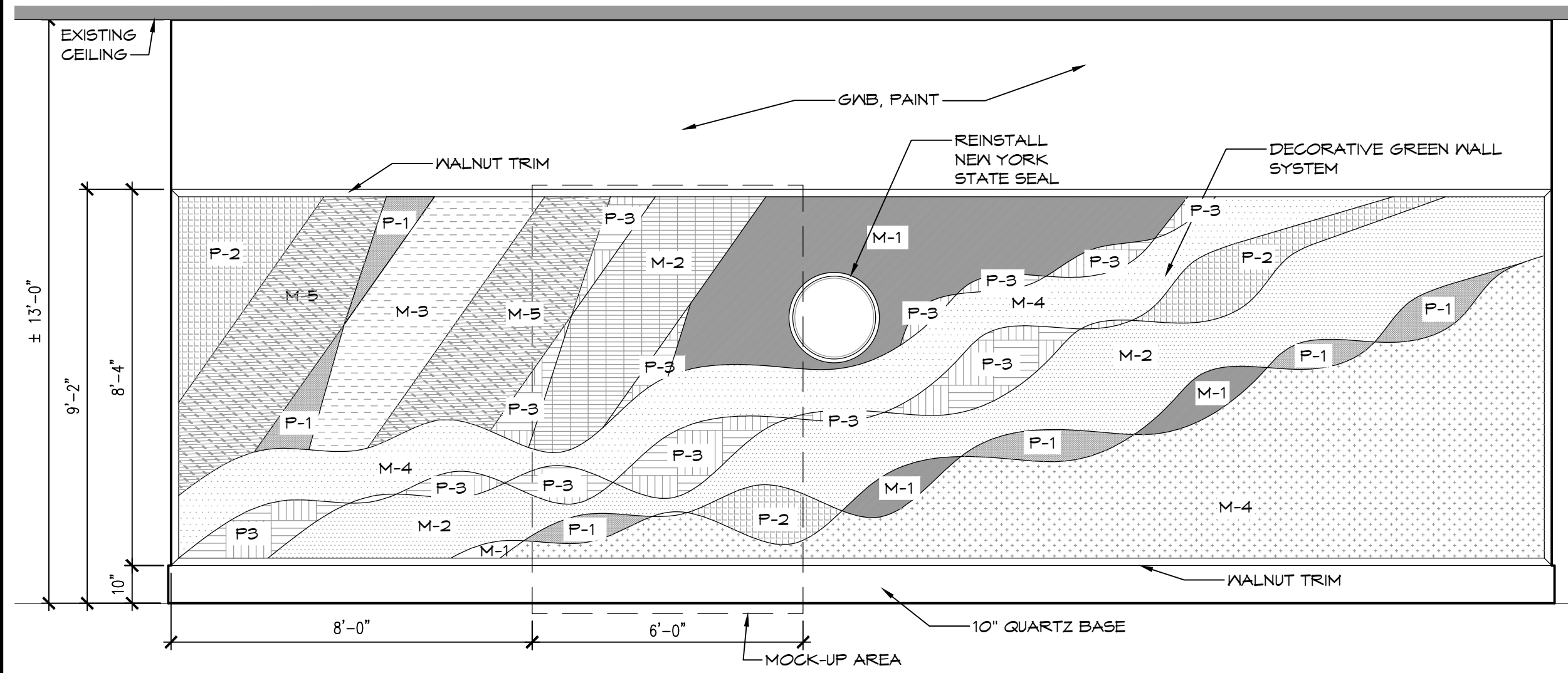
MARK	DATE	DESCRIPTION
2	18 JUNE 2025	ADDENDUM 2
3	17 JUNE 2025	ADDENDUM 1
	19 FEB 2025	BID SET

PROJECT NUMBER: **47207-C**
DESIGNED BY: DE
DRAWN BY: HHV
FIELD CHECK: ---
APPROVED: DKA

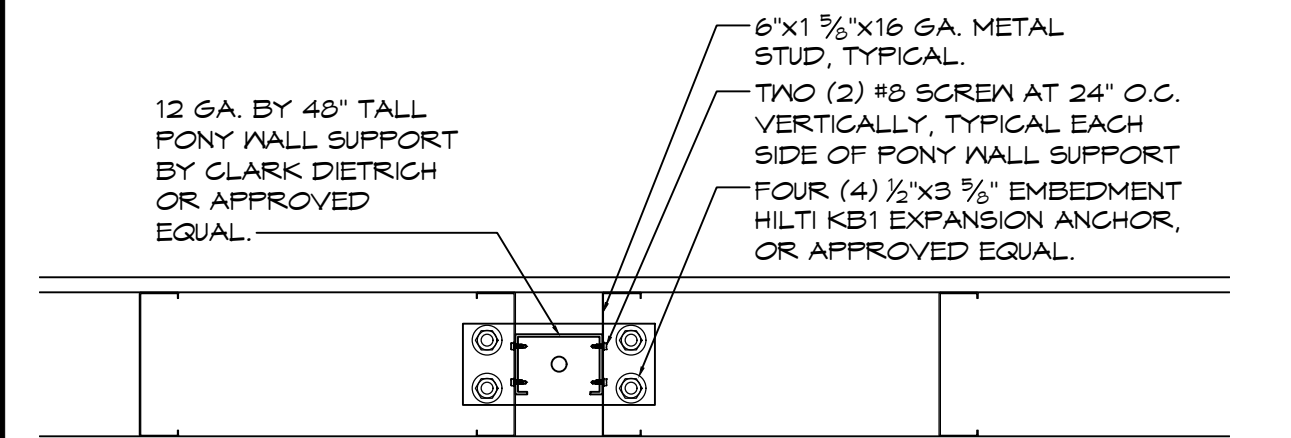
SHEET TITLE: **CASEWORK DETAILS**

DRAWING NUMBER: **A-401**

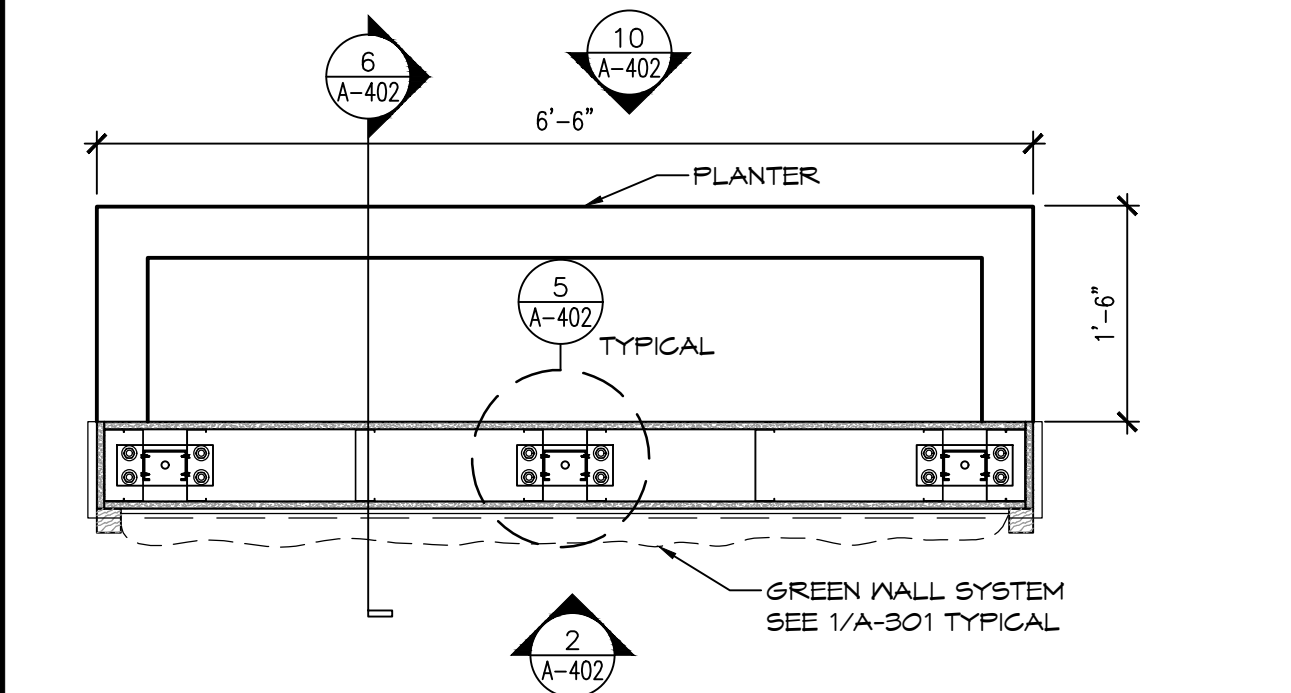
SHEET 39 OF 71



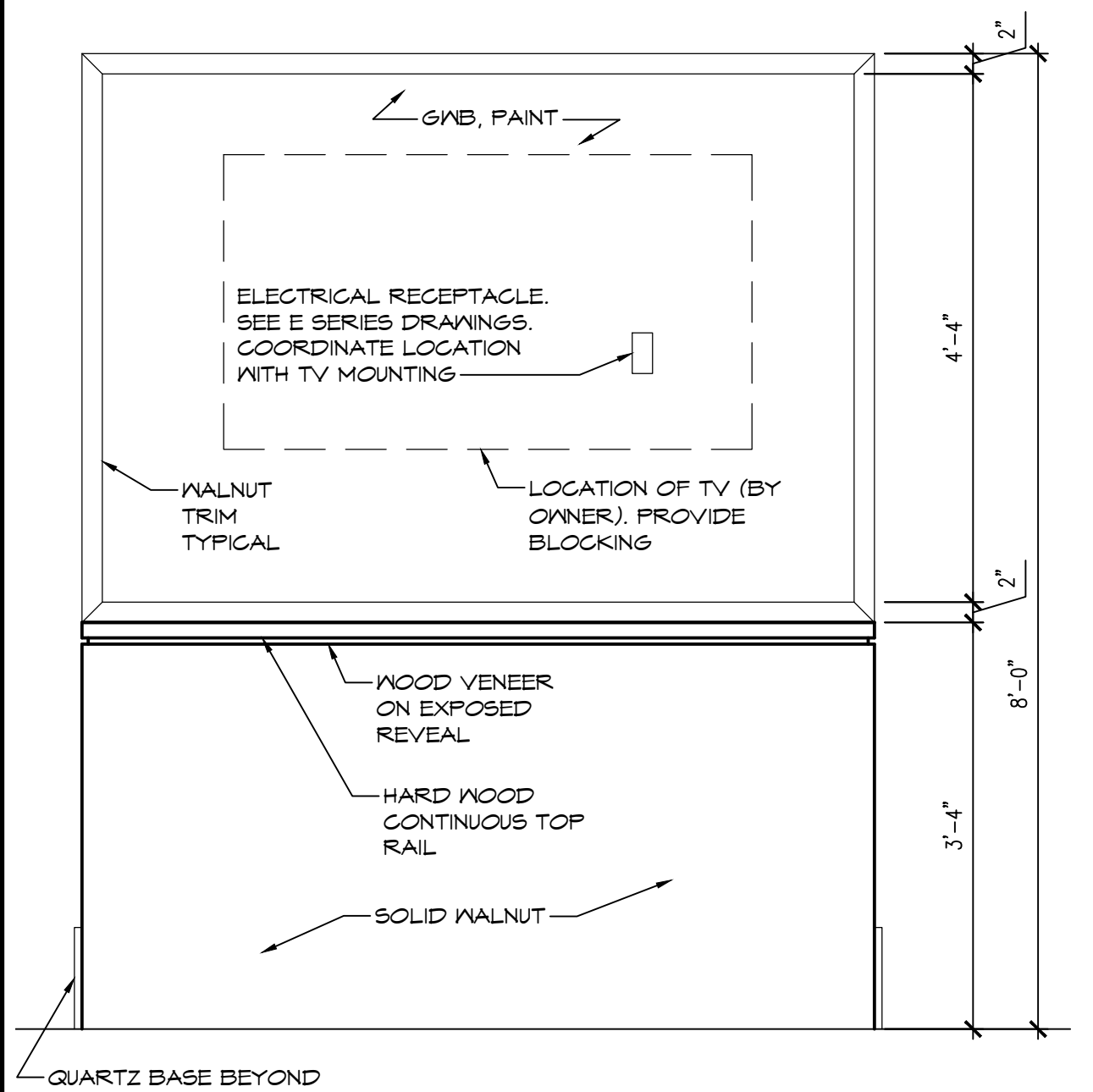
1 NORTH LOBBY GREEN WALL ELEVATION
SCALE: 3/8" = 1'-0"



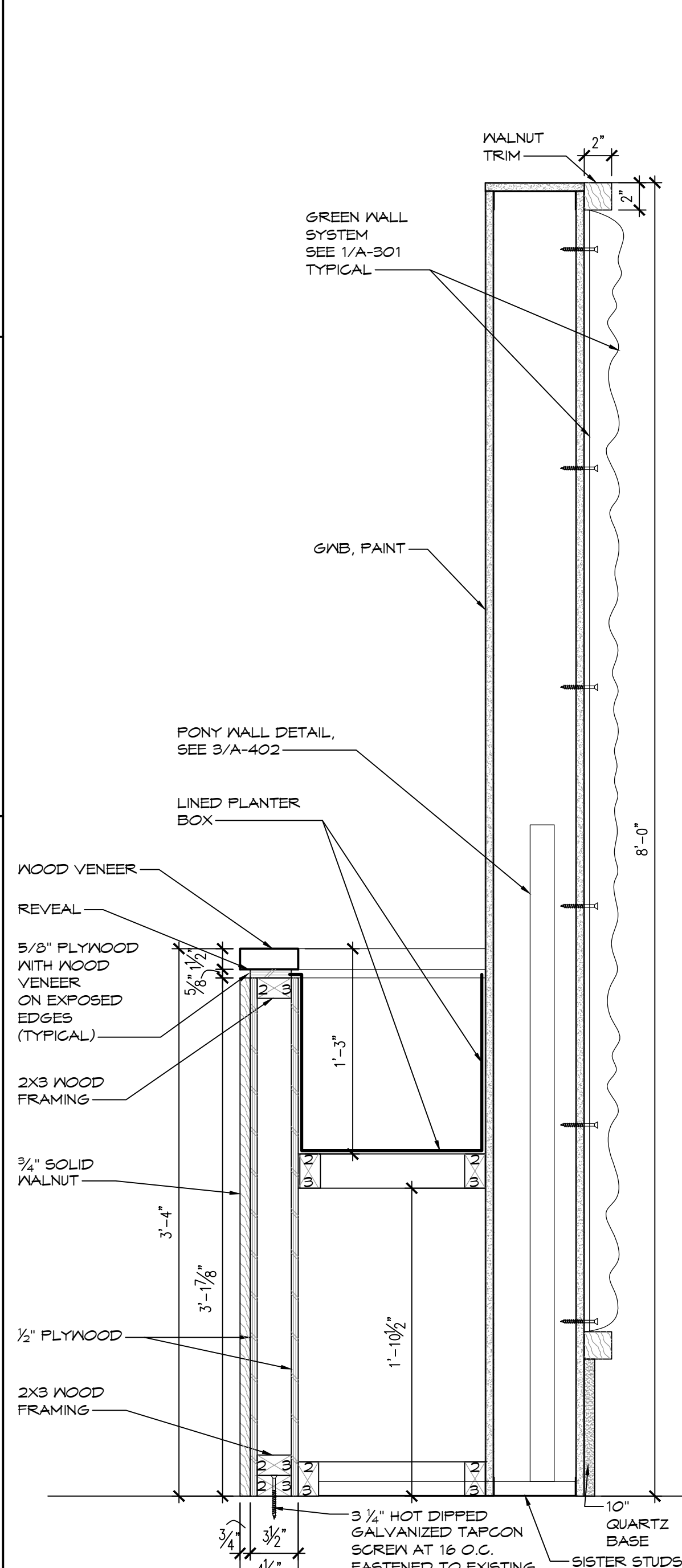
5 EAST AND WEST LOBBY PLANTER DETAIL TYPICAL
SCALE: 1 1/2" = 1'-0"



9 EAST AND WEST LOBBY PLANTER PLAN
SCALE: 3/4" = 1'-0"

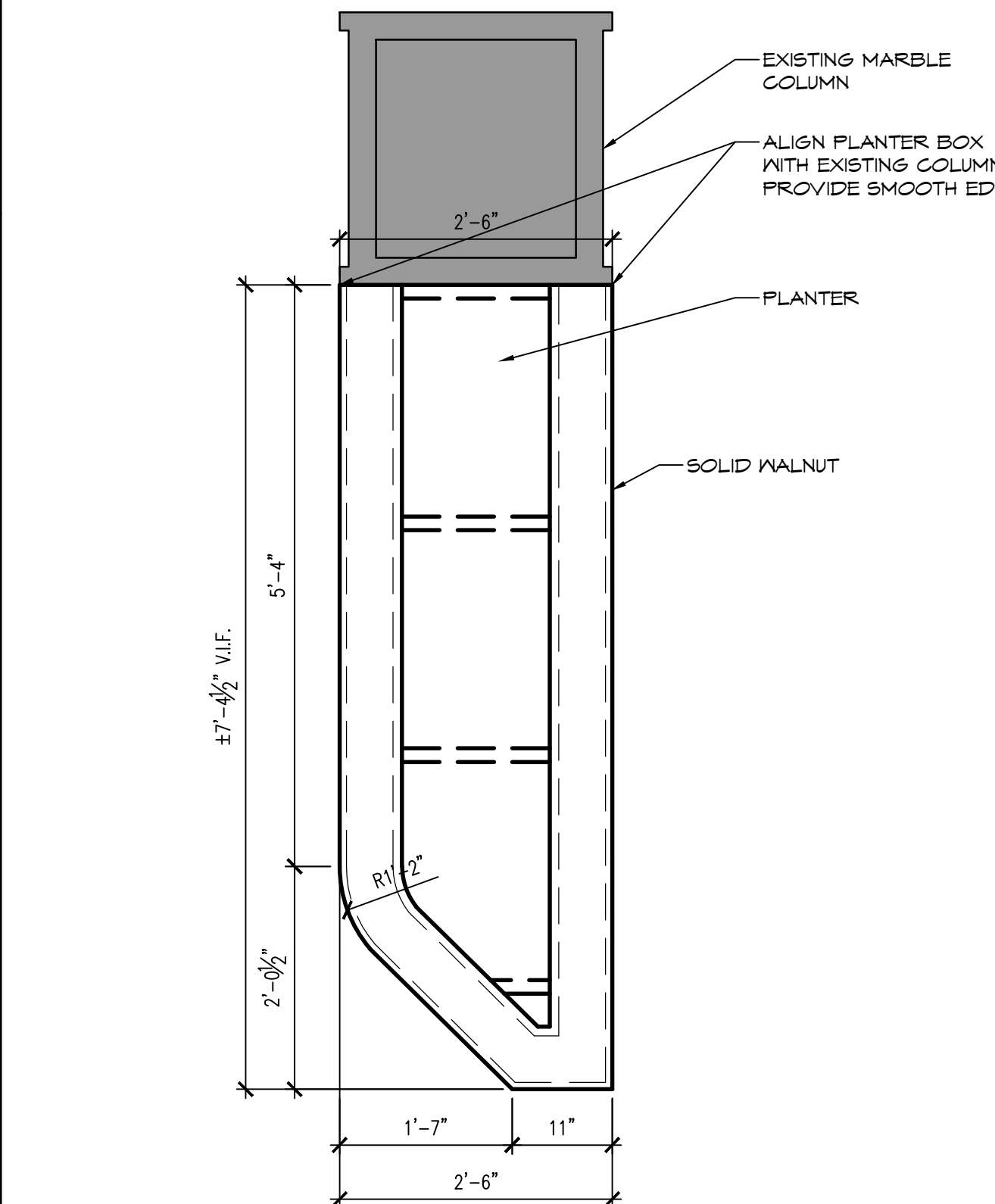


10 EAST AND WEST LOBBY PLANTER ELEVATION
SCALE: 3/4" = 1'-0"

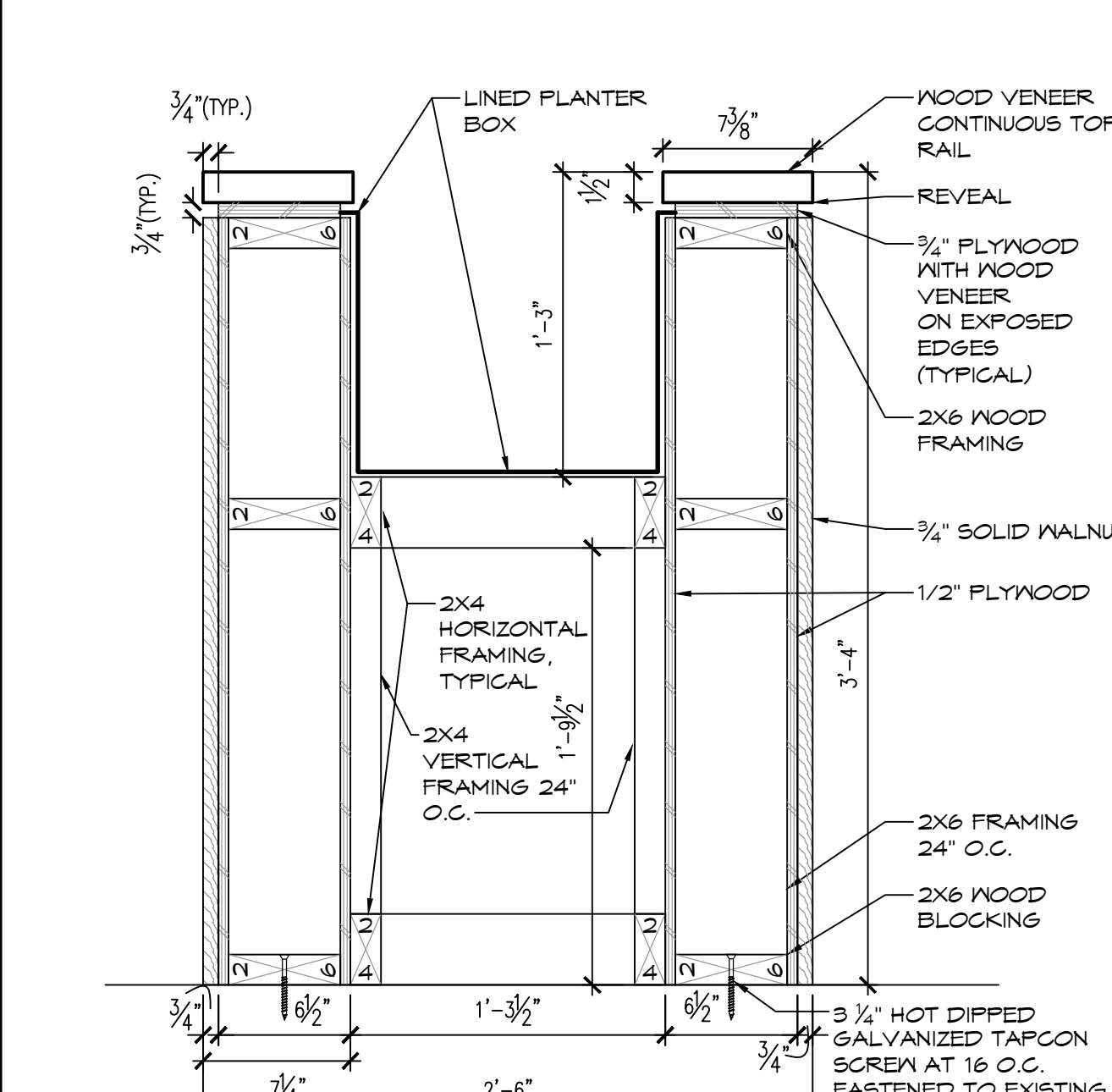


6 SECTION AT PLANTER EAST AND WEST LOBBY
SCALE: 1 1/2" = 1'-0"

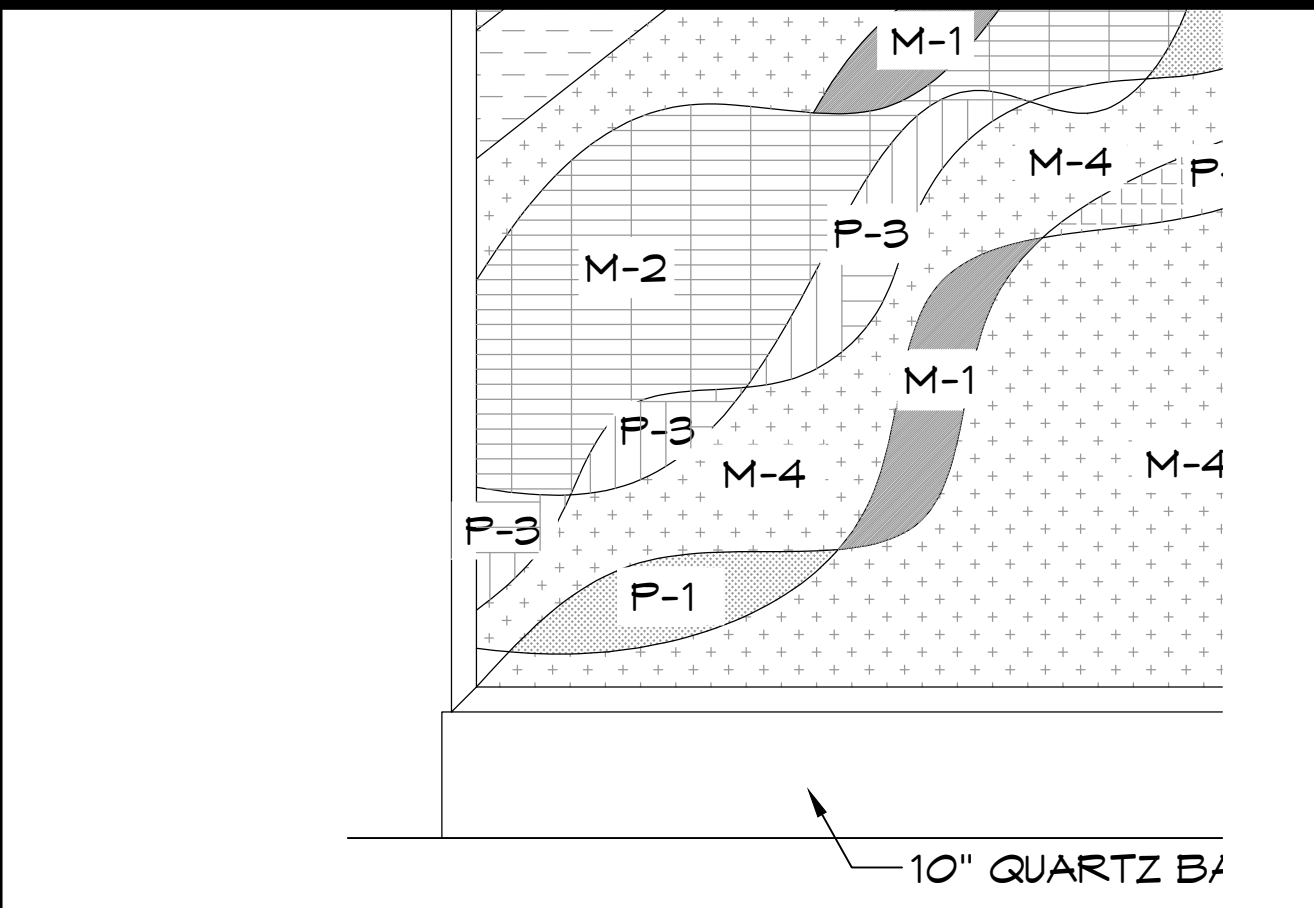
2 GREEN WALL ELEVATION EAST AND WEST LOBBY
SCALE: 201/256" = 1'-0"



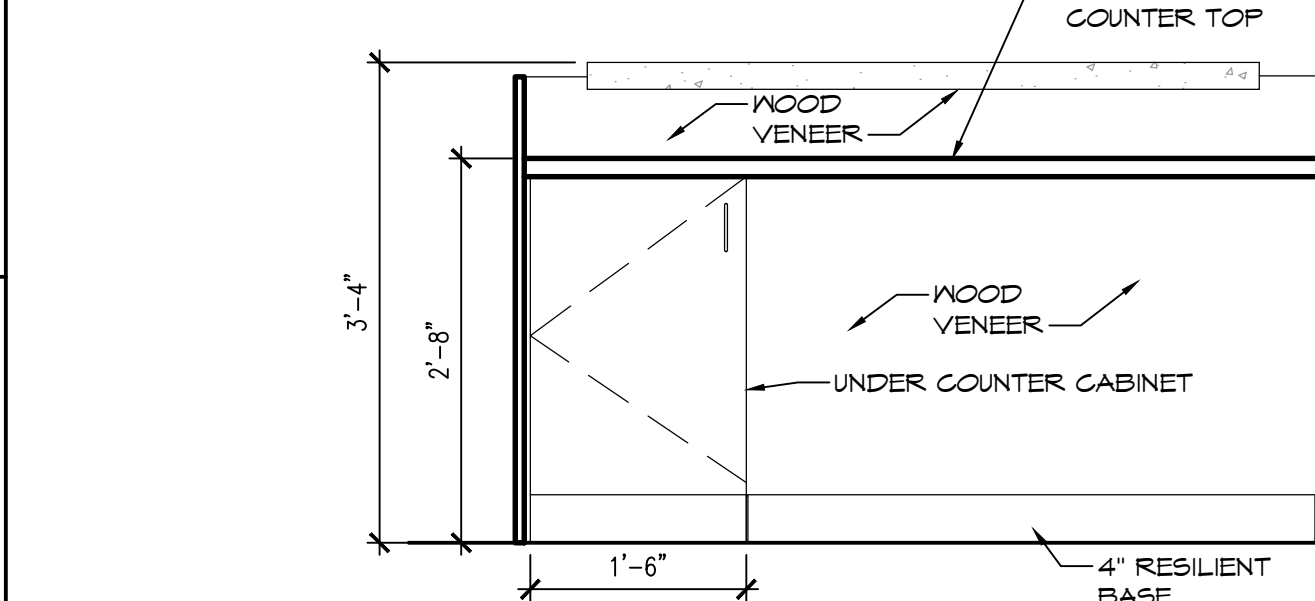
7 NORTH ENTRANCE LOBBY PLANTER PLAN
SCALE: 3/4" = 1'-0"



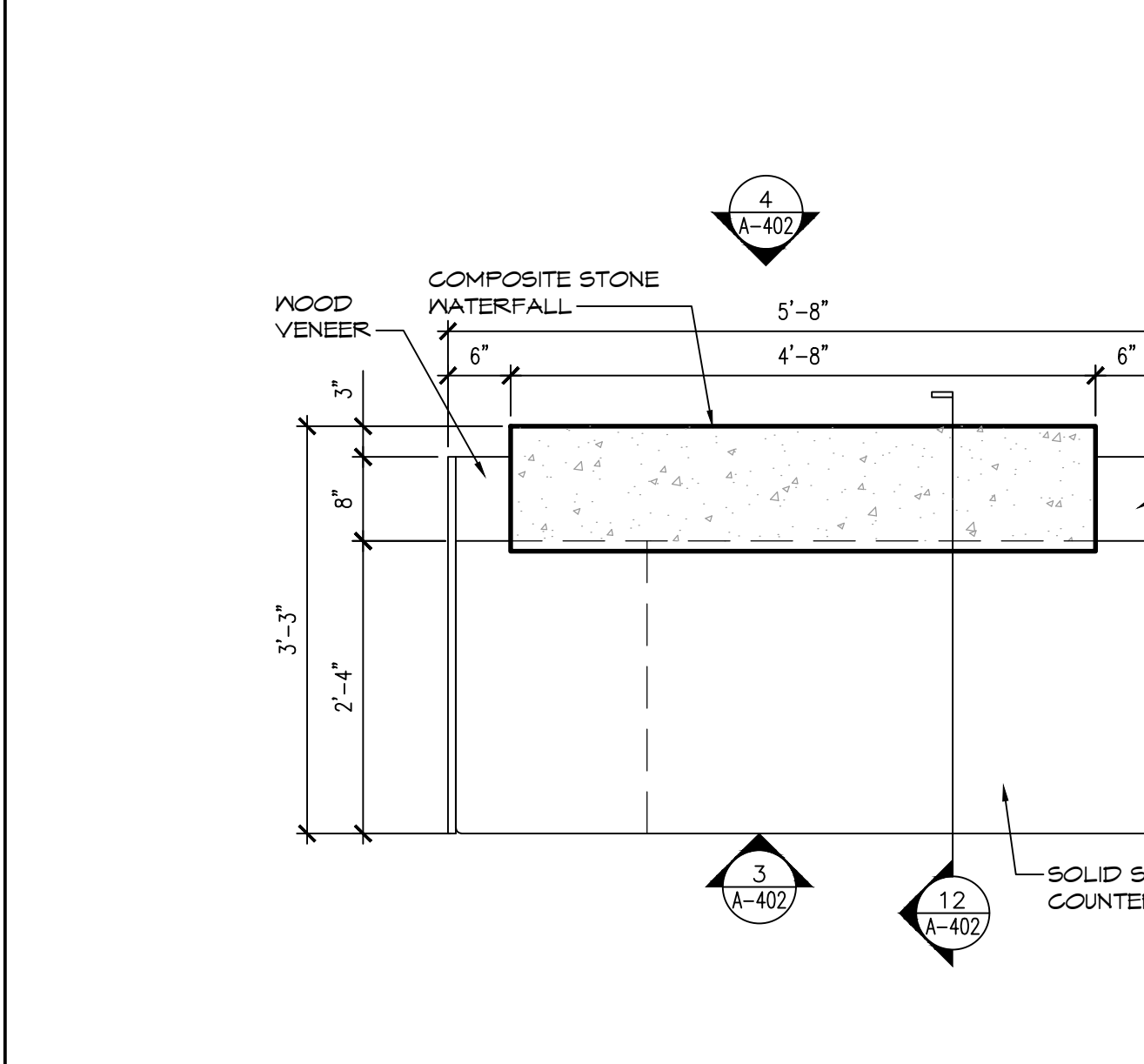
11 PLANTER SECTION
SCALE: 1 1/2" = 1'-0"



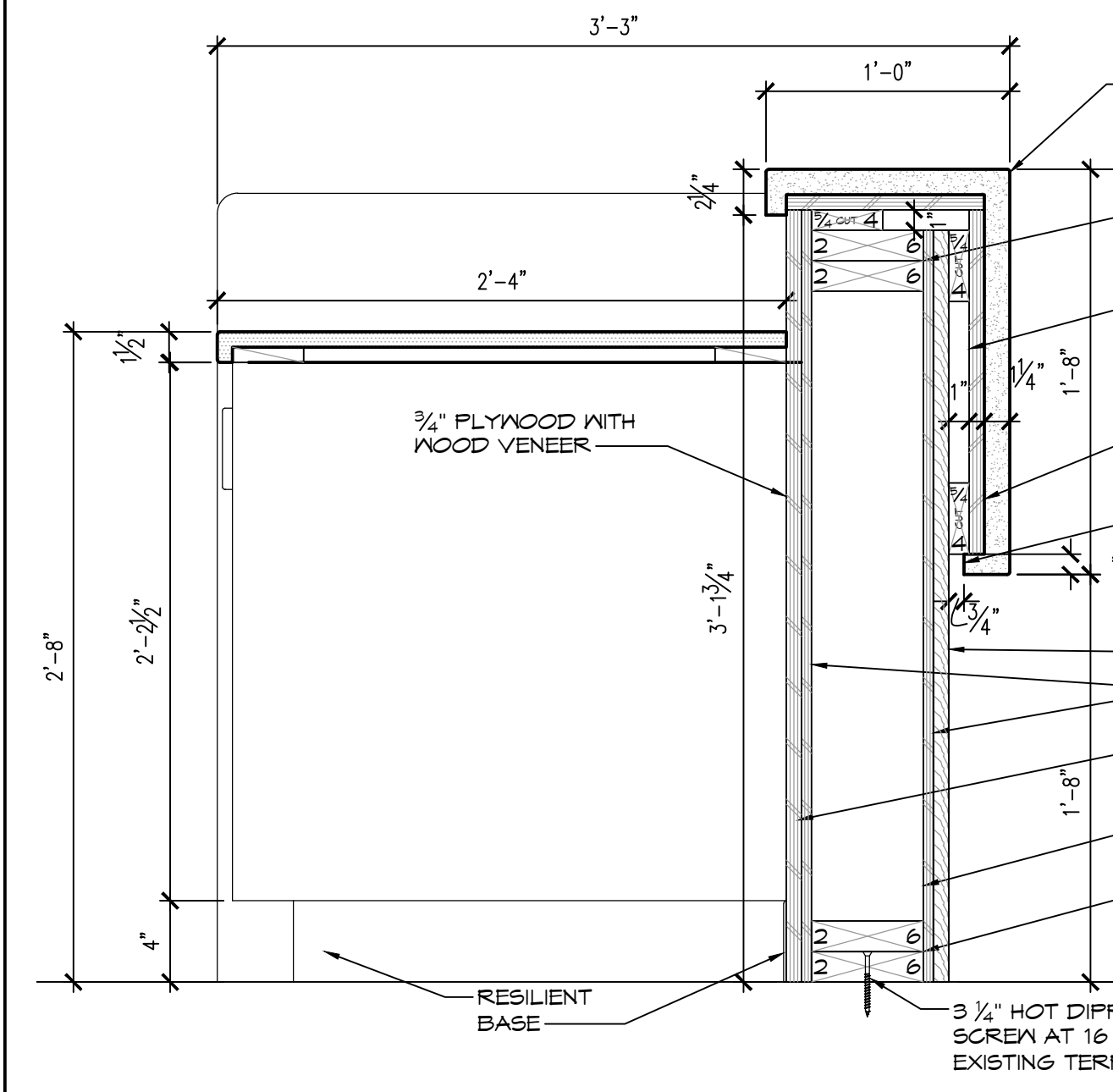
4 EAST AND WEST LOBBY DESK ELEVATION
SCALE: 3/4" = 1'-0"



3 EAST AND WEST LOBBY DESK ELEVATION
SCALE: 3/4" = 1'-0"



8 EAST AND WEST INFORMATION DESK PLAN
SCALE: 3/4" = 1'-0"



12 EAST AND WEST LOBBY INFORMATION DESK SECTION
SCALE: 1 1/2" = 1'-0"

WARNING:
THE ALTERATION OF THIS MATERIAL IN ANY WAY, UNLESS DONE UNDER THE DIRECTION OF A COMPARABLE PROFESSIONAL, I.E. ARCHITECT FOR AN ARCHITECT, ENGINEER FOR AN ENGINEER OR LANDSCAPE ARCHITECT FOR A LANDSCAPE ARCHITECT, IS A VIOLATION OF THE NEW YORK STATE EDUCATION LAW AND/OR REGULATIONS AND IS A CLASS "A" MISDEMEANOR.

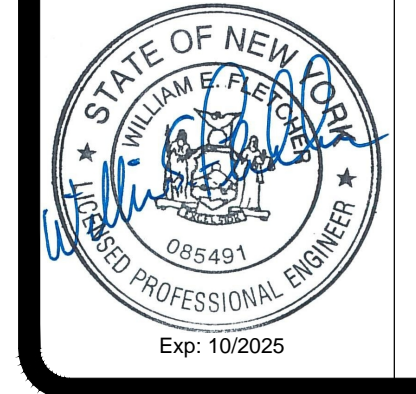


CONTRACT:
CONSTRUCTION
TITLE:
RENOVATE LOBBIES, BUILDING 12
LOCATION:
DEPARTMENT OF LABOR
STATE OFFICE BLDG CAMPUS
ALBANY, NY
CLIENT:
DEPARTMENT OF LABOR

MARK	DATE	DESCRIPTION
2	18 JUNE 2025	ADDENDUM 2
3	17 JUNE 2025	ADDENDUM 1
	19 JUNE 2025	BID SET

PROJECT NUMBER: **47207-C**
DESIGNED BY: DE
DRAWN BY: HHV
FIELD CHECK: ---
APPROVED: DKA
SHEET TITLE:
CASEWORK DETAILS
DRAWING NUMBER:
A-402
SHEET 40 OF 71

WARNING:
THE ALTERATION OF THIS MATERIAL IN ANY WAY, UNLESS DONE UNDER THE DIRECTION OF A COMPARABLE PROFESSIONAL, I.E. ARCHITECT FOR AN ARCHITECT, ENGINEER FOR AN ENGINEER OR LANDSCAPE ARCHITECT FOR A LANDSCAPE ARCHITECT, IS A VIOLATION OF THE NEW YORK STATE EDUCATION LAW AND/OR REGULATIONS AND IS A CLASS "A" MISDEMEANOR.



CONTRACT:
ELECTRICAL

TITLE:
RENOVATE LOBBIES, BUILDING 12

LOCATION:
DEPARTMENT OF LABOR, BUILDING NO. 12
STATE OFFICE BLDG CAMPUS
ALBANY, NY

CLIENT:
DEPARTMENT OF LABOR

MARK	DATE	DESCRIPTION
2	18 JUNE 2025	ADDENDUM 2
1	17 JUNE 2025	ADDENDUM 1
	2025.02.19	FINAL SET

PROJECT NUMBER: 47207 - E

DESIGNED BY: JIK

DRAWN BY: JIK

FIELD CHECK:

APPROVED:

SHEET TITLE:
ENLARGED NORTH LOBBY FLOOR & REFLECTED CEILING POWER PLANS

DRAWING NUMBER:
E-411

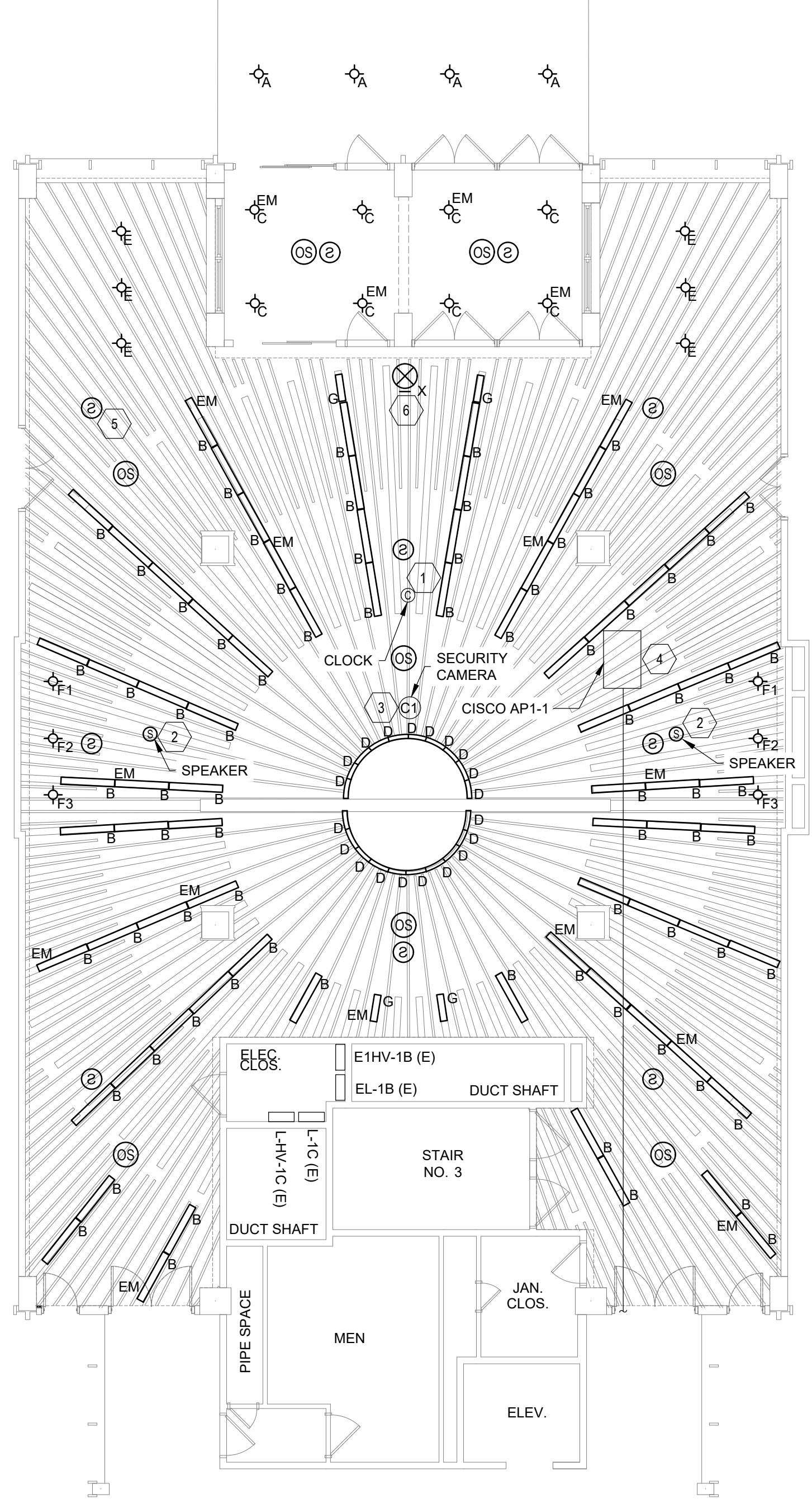
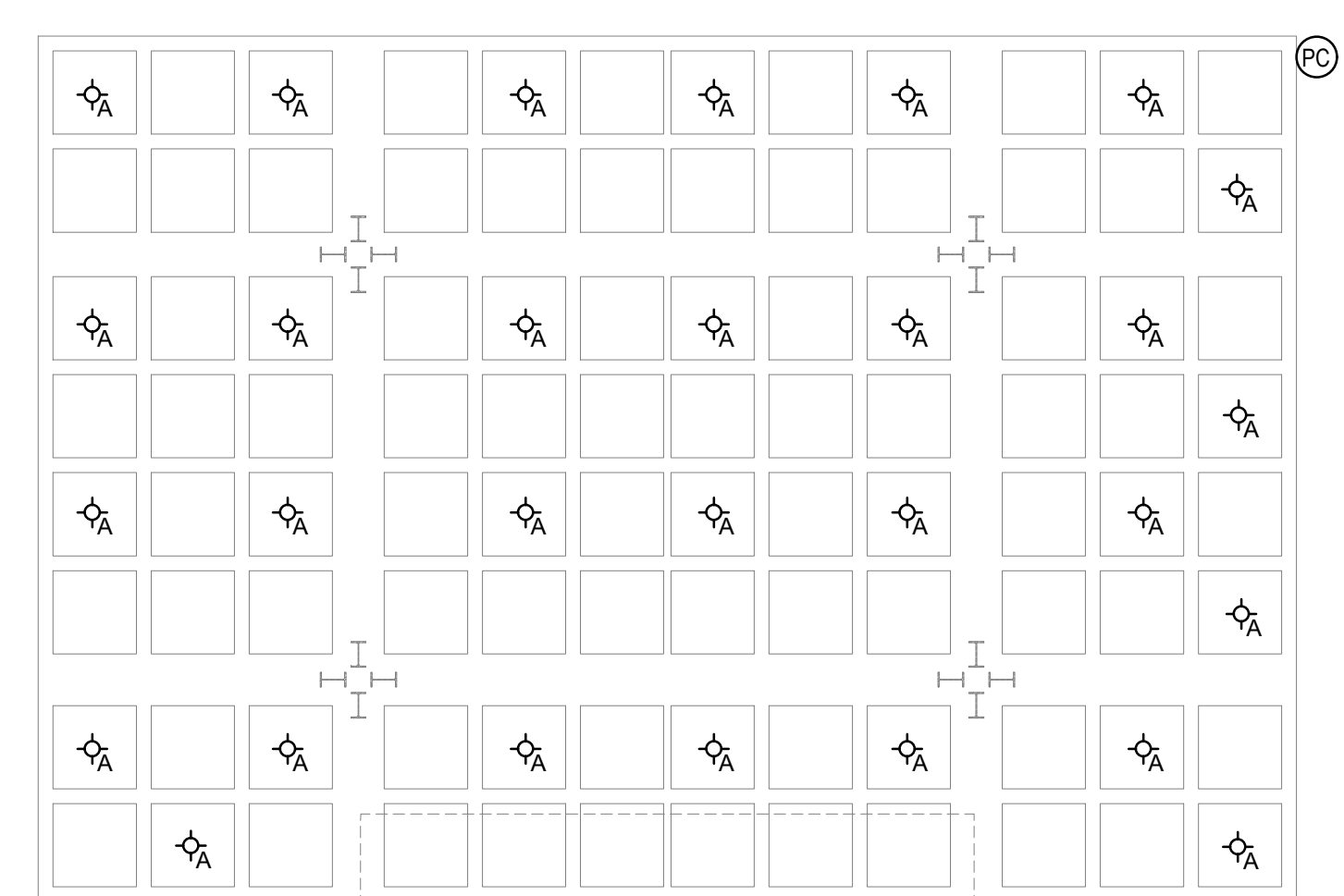
SHEET 61 OF 71

GENERAL NOTES:

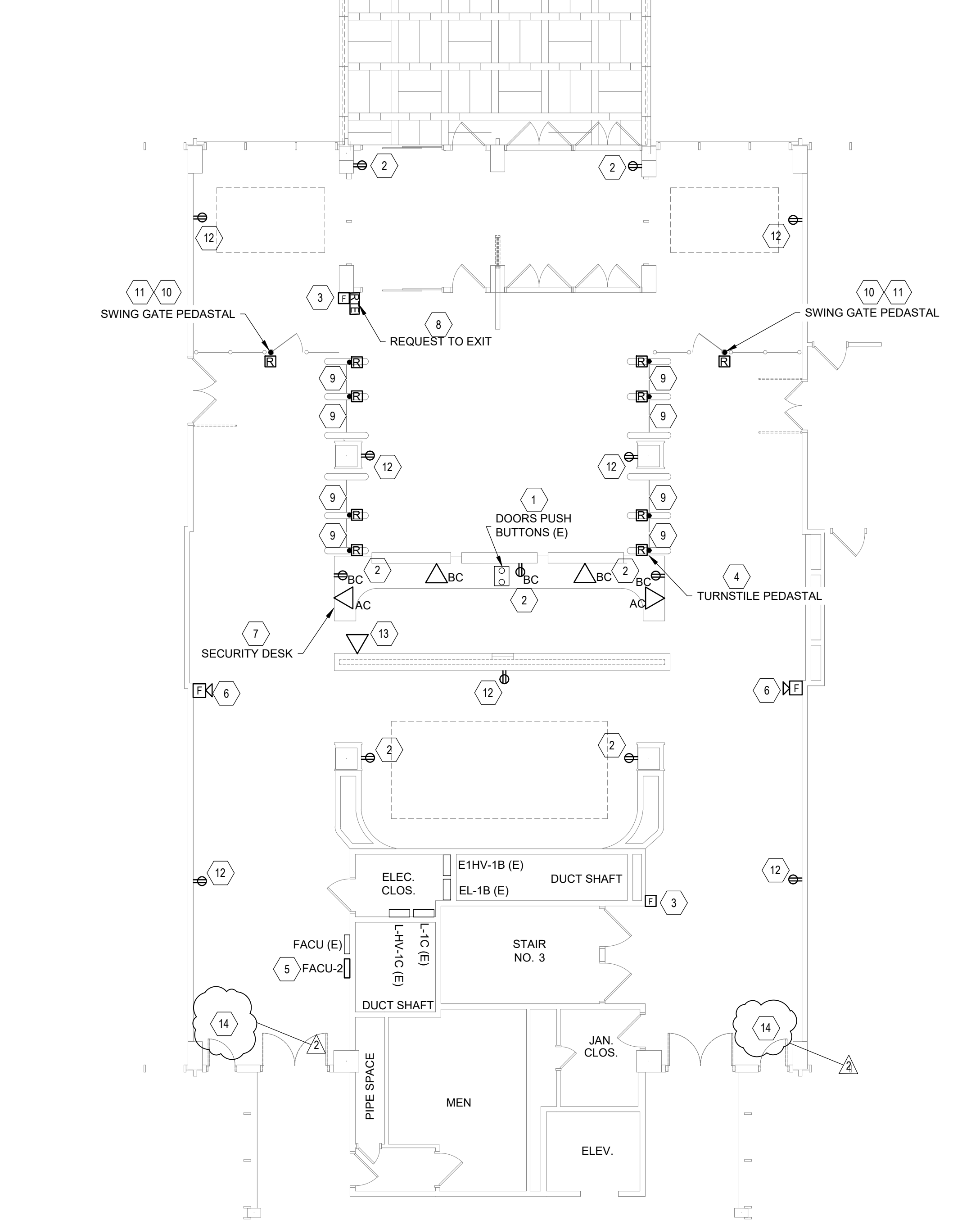
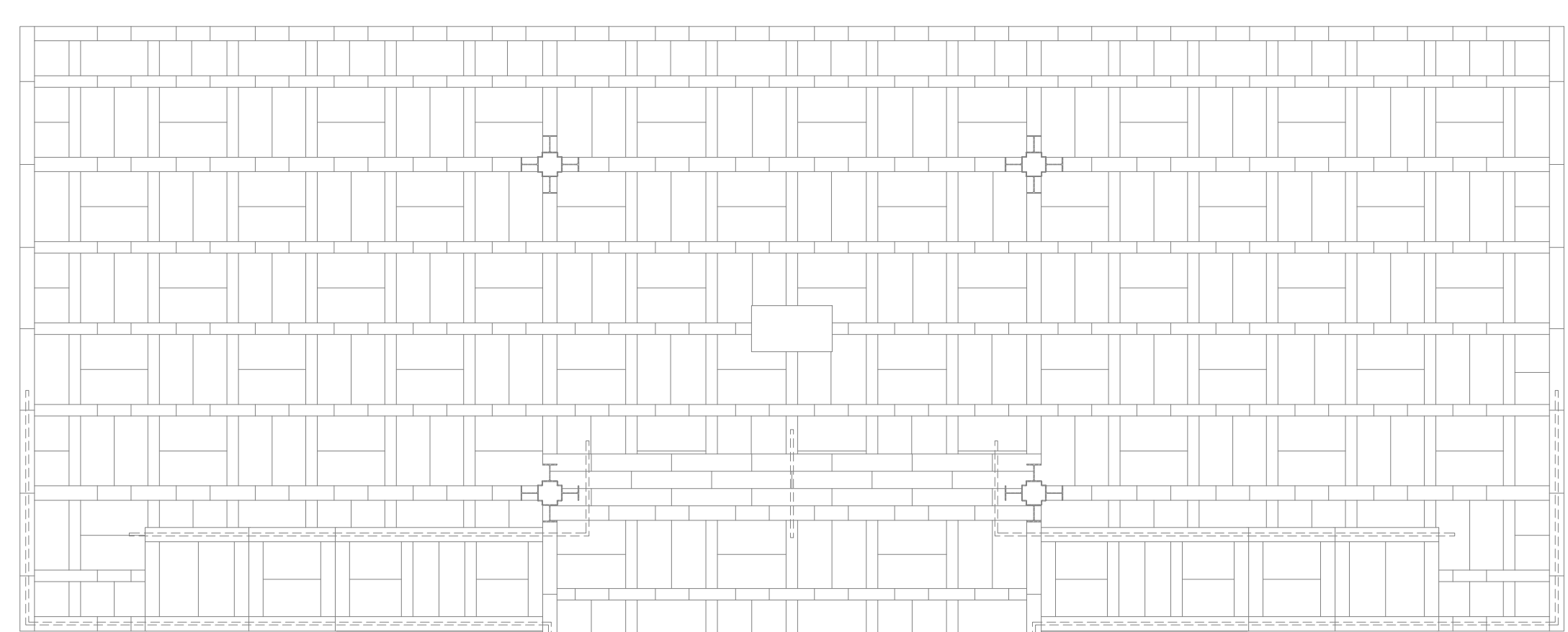
1. THIN LINE TYPES INDICATE EXISTING. BOLD LINE TYPES INDICATE EQUIPMENT TO BE PROVIDED.
2. PROVIDE LIGHT FIXTURES AND ASSOCIATED CONDUIT AND CABLING. SEE E-511 DETAIL 5 FOR LIGHTING CONTROL DETAIL AND E-641 FOR LUMINAIRE SCHEDULE.
3. FIRE ALARM DEVICES WILL BE PROVIDED UNDER A SET ALLOWANCE. PROVIDE AND INSTALL CONDUITS AND CABLING FOR FIRE ALARM DEVICES. MAKE FINAL CONNECTIONS TO THE DEVICES.
4. CANOPY LIGHTS WILL BE CONTROLLED THROUGH A PHOTOCELL.
5. BYPASS ALL SWITCHING FOR EMERGENCY LIGHTS. THESE LIGHTS SHALL BE ON AT ALL TIMES.
6. TYPE B,D, AND G LIGHT FIXTURES SHALL BE MOUNTED AT 9 FEET AND 4 INCHES.
7. TYPE E LIGHT FIXTURES SHALL BE MOUNTED AT 7 FEET.
8. OCCUPANCY SENSORS, SMOKE DETECTORS, EXIT SIGN, EXISTING SECURITY CAMERA, EXISTING CISCO DEVICE, AND EXISTING CLOCK IN THE LOBBY SHALL BE MOUNTED ON THE CEILING BAFFLES. CONDUITS, WIREMOLD AND CABLING SHALL BE ROUTED ABOVE THE WOOD SLAT CEILING.
9. SPEAKERS SHALL BE MOUNTED IN WOOD SLAT CEILING.
10. ALL CONDUIT ABOVE THE CEILING SHALL BE PAINTED BLACK.

KEYED NOTES: #

1. RECONNECT EXISTING CEILING MOUNTED CLOCK AND COMPLETE FINAL ELECTRICAL CONNECTIONS FOLLOWING REPAIR. CLOCK RESTORATION IS INCLUDED IN THE C-CONTRACT. COORDINATE ALL WORK WITH THE ARCHITECTURAL DRAWINGS.
2. PROVIDE CEILING MOUNTED SPEAKER AND ASSOCIATED CONDUIT AND CABLING FROM EXISTING INTERCONNECTION CABINET LOCATED IN ELECTRICAL CLOSET 102.
3. RECONNECT EXISTING CEILING MOUNTED SECURITY CAMERA AND ASSOCIATED CABLING SAVED DURING CONSTRUCTION FOR REUSE. PROVIDE A 3/4" EMT CONDUIT TO RUN CABLES FROM NEAREST JUNCTION BOX. MOUNT ON CEILING BAFFLES.
4. REINSTALL EXISTING CEILING MOUNTED CISCO DEVICE AND ASSOCIATED CABLING SAVED DURING CONSTRUCTION FOR REUSE. PROVIDE WIREMOLD TO RUN CABLES FROM NEAREST JUNCTION BOX.
5. INSTALL SMOKE DETECTORS (TYP. 8) AND ASSOCIATED CONDUIT AND CABLING FROM FACU-2.
6. PROVIDE CEILING MOUNTED EXIT SIGN AND ASSOCIATED CONDUIT AND CABLING FROM EXISTING 20A SPARE CIRCUIT BREAKER IN EXISTING PANEL L-HV-1C LOCATED IN THE ELECTRICAL CLOSET.



2 ENLARGED NORTH LOBBY REFLECTED CEILING POWER PLAN
1/8" = 1'-0"
SCALE: 1/8" = 1'-0"
NORTH



1 ENLARGED NORTH LOBBY FLOOR PLAN
1/8" = 1'-0"
SCALE: 1/8" = 1'-0"
NORTH

GENERAL NOTES:

1. THIN LINE TYPES INDICATE EXISTING. BOLD LINE TYPES INDICATE EQUIPMENT TO BE PROVIDED.
2. FIRE ALARM DEVICES WILL BE PROVIDED UNDER A SET ALLOWANCE. PROVIDE AND INSTALL CONDUITS AND CABLING FOR FIRE ALARM DEVICES. MAKE FINAL CONNECTIONS TO THE DEVICES.
3. COORDINATE THROUGH THE DIRECTORS REPRESENTATIVE FOR PROGRAMMING OF CARD READERS TO THE EXISTING SYSTEM.
4. FOR ALL DEVICES ON THE MARBLE, RUN WIREMOLD FROM THE CEILING DOWN TO EACH DEVICE.

KEYED NOTES: #

1. RECONNECT EAST AND WEST DOOR BUTTONS SAVED DURING CONSTRUCTION FOR REUSE. PROVIDE CONDUIT AND CABLING.
2. PROVIDE RECEPTACLES (TYP. OF 7) AND ASSOCIATED CONDUIT AND CABLING FROM EXISTING PANEL L-1C.
3. INSTALL MANUAL PULL STATION AND ASSOCIATED CONDUIT AND CABLING FROM FIRE ALARM CONTROL UNIT (FACU-2). USE WIREMOLD ON MARBLE TO ROUTE CABLING FROM CEILING TO EACH DEVICE.
4. PROVIDE 18 AWG/6-CONDUCTOR CABLE IN 1/2" CONDUIT FROM THE ACCESS CONTROL PANELS LOCATED IN THE BASEMENT ELECTRICAL CLOSET #4 TO EACH TURNSTILE LANE PIO (TYP. OF 8) TO OPERATE THE GRANT ENTRY, GRANT EXIT, AND INVALID CARD INPUTS. MAKE FINAL CONNECTIONS TO THE DEVICES. RUN CABLE IN CABLE TRAY WHERE SHOWN. CORE DRILL DIRECTLY BELOW EACH TURNSTILE PEDESTAL CONTAINING THE PIO FOR CABLE ROUTING. SEE E-051 FOR ADDITIONAL INFORMATION.
5. INSTALL FIRE ALARM CONTROL UNIT (FACU-2) AND TIE TO EXISTING FIRE ALARM SYSTEM. SEE E-511 DETAIL 2 FOR FIRE ALARM RISER.
6. INSTALL HORN STROBE AND ASSOCIATED CONDUIT AND CABLING FROM FIRE ALARM CONTROL UNIT (FACU-2). SEE E-511 DETAIL 2 FOR FIRE ALARM RISER.
7. PROVIDE RECEPTACLES, DATA PORTS, ASSOCIATED JUNCTION BOXES, CONDUITS AND CABLING AT THE SECURITY DESK. RECEPTACLES AND DATA PORTS SHALL BE FED FROM EXISTING LOCATIONS. COORDINATE WITH IT DEPARTMENT FOR DATA PORT REQUIREMENTS. DATA CABLING SHALL BE CAT 6.
8. PROVIDE REQUEST TO EXIT BUTTON AND WIREMOLD. RECONNECT EXISTING CABLING SAVED DURING CONSTRUCTION FOR REUSE.
9. FOR EACH TURNSTILE LANE, PROVIDE THE FOLLOWING AND MAKE FINAL TERMINATIONS:
 - PROVIDE 14AWG/2-CONDUCTOR INTER-CONNECT CABLE FOR POWER FROM PIO BOARD TO SIO BOARD.
 - PROVIDE 18AWG/2-CONDUCTOR INTER-CONNECT CABLE FOR COMMUNICATIONS FROM PIO BOARD TO SIO BOARD.
 - PROVIDE 18AWG/2-CONDUCTOR STRANDED FIRE-RATED CABLE FROM THE PIO TO AN ISOLATED NORMALLY CLOSED DRY CONTACT FIRE ALARM RELAY. RELAY TO BE CONNECTED TO THE FIRE ALARM SYSTEM.
 - PROVIDE A CAT 6 CABLE FROM THE EXISTING DATA RACK IN THE BASEMENT STORAGE B-1 TO THE PIO. COORDINATE WITH NYS DOL IT DEPARTMENT BEFORE MAKING FINAL CONNECTIONS.
 - PROVIDE A #12 INSULATED GROUND CONDUCTOR IN 1/2" CONDUIT FROM EACH PEDESTAL BASE TO THE GROUNDING SYSTEM IN THE BASEMENT ELECTRICAL CLOSET #4.
10. PROVIDE (2) #12 & (1) #12G IN A 3/4" EMT CONDUIT FROM AN EXISTING 20A SPARE CIRCUIT BREAKER IN EXISTING PANEL L-BC LOCATED IN THE BASEMENT TO THE SWING GATE PEDESTAL (TYP. OF 2). SEE E-051 FOR ADDITIONAL INFORMATION.
11. FOR EACH SWING GATE, PROVIDE THE FOLLOWING AND MAKE FINAL TERMINATIONS:
 - PROVIDE 18AWG/2-CONDUCTOR STRANDED FIRE-RATED CABLE FROM THE SWING GATE PEDESTAL TO AN ISOLATED NORMALLY CLOSED DRY CONTACT FIRE ALARM RELAY. RELAY TO BE CONNECTED TO THE FIRE ALARM SYSTEM.
 - PROVIDE A CAT 6 CABLE FROM THE EXISTING DATA RACK IN THE BASEMENT STORAGE B-1 TO THE SWING GATE PEDESTAL. COORDINATE WITH NYS DOL IT DEPARTMENT BEFORE MAKING FINAL CONNECTIONS.
12. PROVIDE RECEPTACLES (TYP. OF 7) MOUNTED AT 72" ABOVE FINISHED FLOOR AND ASSOCIATED CONDUIT AND CABLING FROM EXISTING PANEL L-1C.
13. PROVIDE A DATA PORT AND ASSOCIATED CONDUIT AND CABLING ON THE WALL MOUNTED AT 72" ABOVE FINISHED FLOOR. DATA PORT SHALL BE FED FROM EXISTING LOCATION. SEE ED-411 DETAIL 1 KEYNOTE 11. COORDINATE WITH IT DEPARTMENT FOR DATA PORT REQUIREMENTS. DATA CABLING SHALL BE CAT 6.
14. PROVIDE (2) #12 & (1) #12G IN 3/4" EMT CONDUIT FROM PANEL L-1C TO THE NORTH LOBBY DOOR OPENERS. SEE E-642 FOR PANELBOARD SCHEDULE.